

# WASHBURN PRESIDENT'S SUITE

**GENERAL INFO:**

AIA DOCUMENT "A201, GENERAL CONDITIONS OF THE CONTRACT FOR CONSTRUCTION" SHALL BE INCORPORATED INTO THE CONTRACT BY REFERENCE.

ALL WORK SHALL BE INSTALLED PER THE CURRENTLY ADOPTED CODES, ORDINANCES, LAWS & STATUTES OF THE AUTHORITY HAVING JURISDICTION.

ALL PRODUCTS SHALL BE INSTALLED PER MANUFACTURER'S RECOMMENDATIONS.

CONTRACTOR SHALL NOTIFY OWNER & ARCHITECT OF DISCREPANCIES BETWEEN DRAWINGS & FIELD CONDITIONS IMMEDIATELY UPON DISCOVERY.

**ARCHITECT:** FALK ARCHITECTS, INC.  
BRYAN FALK, LICENSED ARCHITECT, NCARB, LEED AP  
BRYAN@FALK-ARCHITECTS.COM  
785-691-9959  
827 N KANSAS AVE.  
TOPEKA, KS 66608  
www.falk-architects.com

**CONTRACTOR:**

**PROJECT DESCRIPTION:**

INTERIOR RENOVATION OF PRESIDENT'S SUITE AND HOSPITALITY ROOM IN WASHBURN UNIVERSITY'S BIANCHINO PAVILLION.

**SPECIFICATIONS:**

**SECTION 01 3000 - PRODUCT SUBMITTALS:**

SUBMIT PRODUCT DATA FOR EACH PRODUCT USED. IF PRODUCT CUTSHEETS CONTAIN MULTIPLE PRODUCTS HIGHLIGHT PRODUCT AND OPTIONS BEING USED PRIOR TO SUBMITTING TO GENERAL CONTRACTOR & ARCHITECT. ALLOW 3 WEEKS FOR INITIAL REVIEW AND 2 WEEKS FOR RESUBMITTAL.

ALL PRODUCTS TO BE INSTALLED PER MANUFACTURERS RECOMMENDATIONS & INSTRUCTIONS. IF MANUFACTURERS RECOMMENDATIONS DIFFER FROM ARCHITECTS SPECIFICATIONS INSTALL PER MANUFACTURER ONLY AFTER DISCUSSING WITH OWNER & ARCHITECT.

ALL PRODUCTS AS SPECIFIED UNLESS APPROVED BY ARCHITECT.

SUBMIT COLOR/TEXTURE SAMPLES FOR APPROVAL FOR ALL PRODUCTS.

PRODUCTS HAVE BEEN SPECIFIED PER WASHBURN UNIVERSITY STANDARDS.

**SECTION 01 5000 - FACILITIES & TEMPORARY CONTROLS:**

PROVIDE SAFETY PRECAUTIONS AROUND CONSTRUCTION & STAGING AREAS. PROVIDE BARRICADES, WARNING SIGNS & ENVIRONMENTAL PROTECTION TO COMPLY WITH BUILDING CODE REQUIREMENTS, HEALTH & SAFETY REGULATIONS, POLICE & FIRE DEPARTMENT CONSIDERATIONS & ENVIRONMENTAL PROTECTION REGULATIONS.

COMPLY WITH NFPA 241 "STANDARD FOR SAFEGUARDING CONSTRUCTION ALTERATIONS AND DEMOLITION OPERATIONS & ALL OTHER CODES & SAFETY REQUIREMENTS".

**SECTION 01 7000 - EXECUTION & CLOSEOUT**

MAKE VERTICAL ELEMENTS PLUMB AND HORIZONTAL ELEMENTS LEVEL UNLESS OTHERWISE INDICATED.

EXECUTE FINAL CLEANING BEFORE SUBSTANTIAL COMPLETION WALK THRU.

NOTIFY ARCHITECT WHEN WORK IS READY FOR SUBSTANTIAL AND FINAL COMPLETION.

PROVIDE 1 YEAR WARRANTY. 1 YEAR PERIOD BEGINS AT "SUBSTANTIAL COMPLETION" OR IN THE OPINION OF THE ARCHITECT.

10 MONTHS AFTER SUBSTANTIAL COMPLETION COORDINATE WALK THROUGH OF BUILDINGS TO REVIEW ANY DEFECTS. REPAIR DEFECTS PRIOR TO 1 YEAR WARRANTY ENDING.

**BASE BID: REMODEL PRESIDENT'S SUITE AND HOSPITALITY ROOM PER DRAWINGS & SPECIFICATIONS.**

**ALTERNATE BIDS:**

ALTERNATE #1. REPLACE EXISTING CEILING TILES AND DIFFUSERS ON ENTIRE SECOND FLOOR.

ALTERNATE #2. REPLACE FIXED STADIUM SEATING WITH UPDATED FIXED SEATING CHOSEN BY OWNER.

ALTERNATE #3. PROVIDE NEW CARPET AND PAINT IN BOX SUITES 202, 203, 204, 206, 297, AND 208. REFERENCE SHEET A701.

**SPECIFICATIONS:**

**DIVISION 09 - FINISHES:**

REFERENCE FINISH SCHEDULE ON SHEET A701.

INSTALL ALL FINISHES PER MANUFACTURER RECOMMENDATIONS.

**DIVISION 11 - EQUIPMENT:**

REFERENCE EQUIPMENT/FIXTURE SCHEDULE ON SHEET A704.

INSTALL ALL EQUIPMENT AND FIXTURES PER MANUFACTURER RECOMMENDATIONS.

**DIVISION 12 - FURNISHINGS:**

FURNITURE TO BE OWNER FURNISHED + CONTRACTOR INSTALLED.

**CODE ANALYSIS:**

**REASON FOR SUBMITTAL - REMODEL**

**FULLY SPRINKLED - YES**

**ACTUAL SQUARE FOOTAGE - NO CHANGE**

**ACTIVE FIRE SAFETY FEATURES -**

FIRE ALARM

FIRE EXTINGUISHER

EXIT SIGNS

**TOTAL OCCUPANT LOAD - 30**

**FACILITY NAME - WASHBURN UNIVERSITY, BIANCHINO PAVILLION**

**FACILITY ADDRESS - 1700 SW COLLEGE AVE, TOPEKA, KS 66621**

**CITY - TOPEKA COUNTY - SHAWNEE**

**LOCAL FIRE DEPARTMENT - CITY OF TOPEKA**

**WATER SUPPLY - CITY OF TOPEKA**

**LOCAL CITY INSPECTION DEPARTMENT - CITY OF TOPEKA**

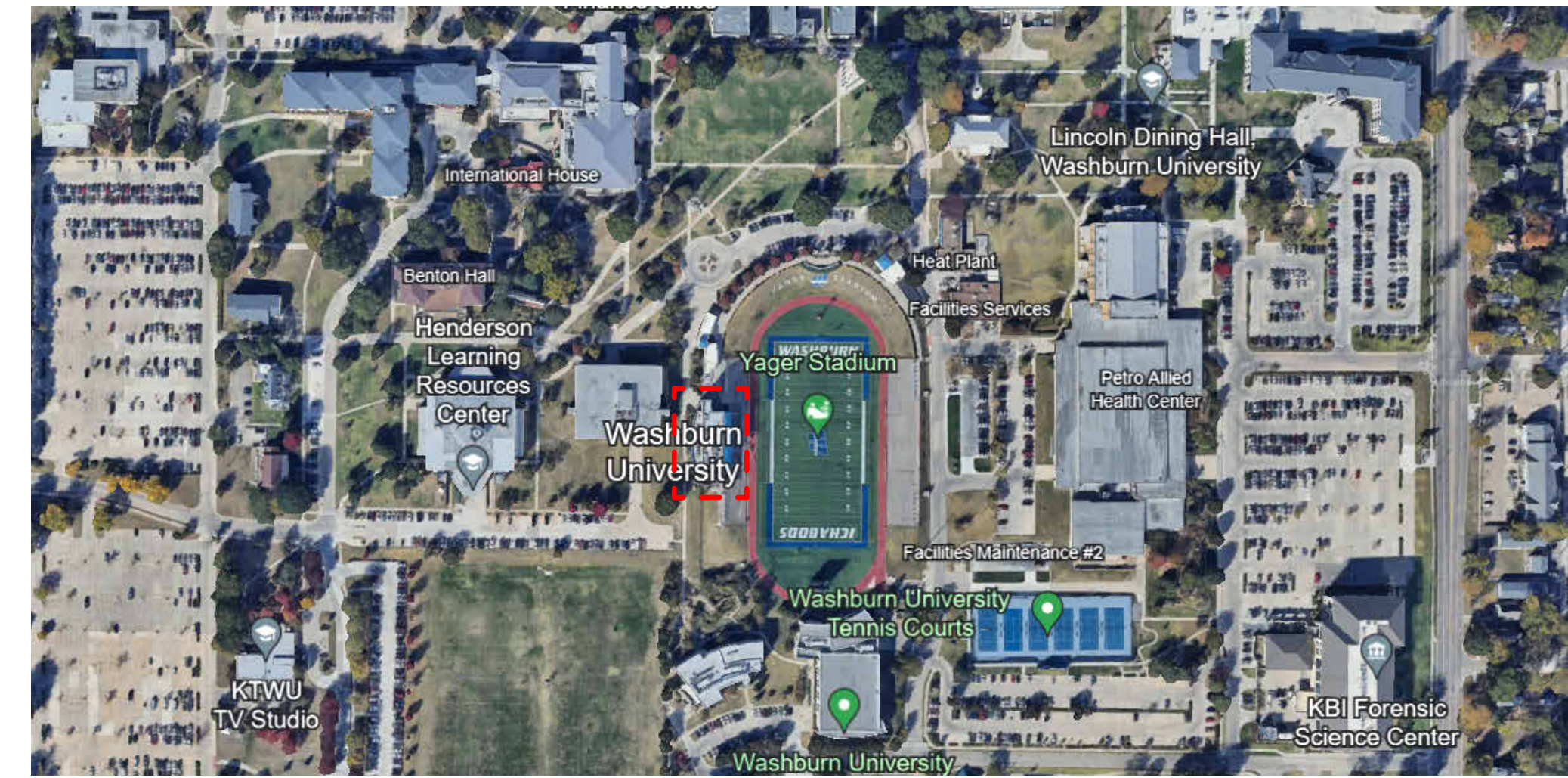
**CODES:**  
2021 International Building Code (IBC)  
2021 International Existing Building Code (IEBC)  
2021 International Energy Conservation Code (IECC)  
2015 Uniform Mechanical Code  
2023 National Electrical Code  
2018 Uniform Plumbing Code  
2021 International Fire Code (IFC)  
2015 Life Safety Code  
2010 ADA Standards for Accessible Design  
ICC/ANSI 117.1 & ADAAG & FHA / FHAAG  
CITY OF TOPEKA MUNICIPAL CODE

**PROFESSIONAL INFO:**

BRYAN FALK  
BRYAN@FALK-ARCHITECTS.COM  
785-691-9958  
827 N KANSAS AVE, TOPEKA, KS 66608

**NOTES:**

CONTRACTOR TO VERIFY ALL EXISTING CONDITIONS PRIOR TO BEGINNING WORK. NOTIFY ARCHITECT OF ANY DISCREPANCIES.



SITE LOCATION



CD  
DATE: 01-23-2025  
2024-073

WASHBURN PRESIDENT'S SUITE  
1700 SW COLLEGE AVE, TOPEKA, KS 66621



DRAWN BY: MB  
CHECKED BY: BJF

**FALK**  
ARCHITECTS  
© 2024 Falk Architects Inc.

**G000**

COVER SHEET

FALK ARCHITECTS INC

SHEET INDEX	
G000	COVER SHEET
A101	FLOOR PLANS
A102	CEILING PLANS
A201	ELEVATIONS
A301	DETAILS
A701	FINISH PLAN + SCHEDULE
A702	FINISH BOARD
A704	EQUIPMENT/FIXTURE PLAN + SCHEDULE

DATE PRINTED: 1/27/2025 10:50:42 AM  
FILE PATH: G:\shorcut\layouts-by-id\1\FID\WDA\WIKI\wzob6GAA-mw\KUDLXPDP24 Contract\2024-073 Washburn Presidents Suite\rev\2024-073 Washburn Presidents Suite.rvt 08.29.rvt

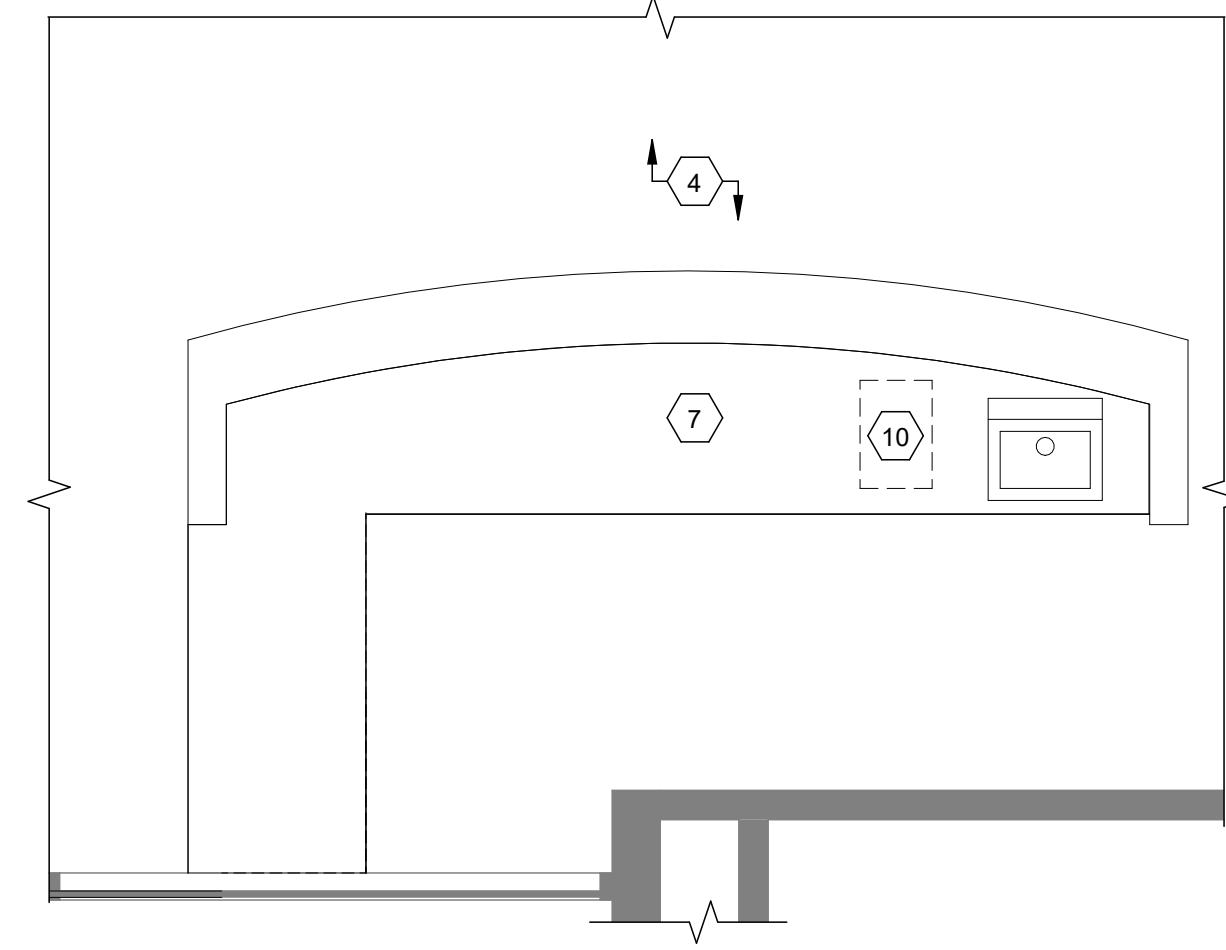


# FLOOR PLAN DEMO NOTES

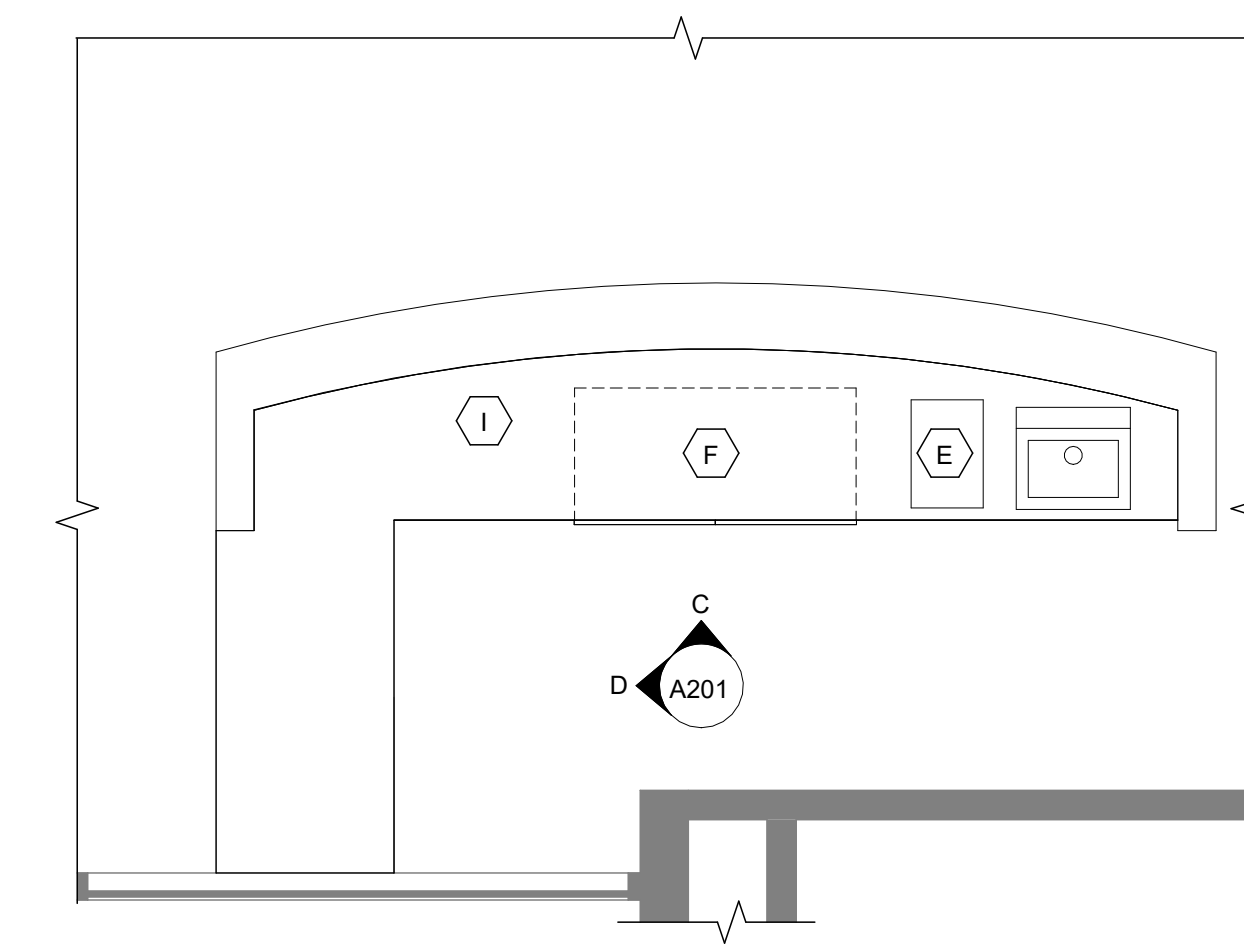
- 1 REMOVE ALL EXISTING CASEWORK
- 2 REMOVE ALL EXISTING WALL SHELVING
- 3 REMOVE UNDER COUNTER FRIDGE, RETAIN FOR FUTURE INSTALLATION OR MOVED TO ANOTHER LOCATION ON UNIVERSITY CAMPUS
- 4 REMOVE AND DISPOSE OF EXISTING CARPET IN ENTIRE ROOM
- 5 REMOVE ANY FURNITURE, RETAIN FOR FUTURE INSTALLATION OR MOVED TO ANOTHER LOCATION ON UNIVERSITY CAMPUS
- 6 REMOVE STAIRS, PATCH AND REFINISH WHERE NECESSARY
- 7 REMOVE AND DISPOSE OF COUNTERTOPS
- 8 REMOVE AND DISPOSE OF BUILT IN BAR-HEIGHT COUNTER IN PREPARATION FOR NEW COUNTER
- 9 REMOVE AND DISPOSE OF UNDER CABINET LIGHTING
- 10 CUT OUT AND DISPOSE OF PORTION OF EXISTING COUNTER IN PREPARATION FOR ICE SINK
- 11 REMOVE AND RETAIN FIXED SEATING IN PREPARATION FOR NEW SEATING
- 12 REMOVE RAILING, RETAIN FOR RE-USE ON NEW STAIRS

# FLOOR PLAN LEGEND

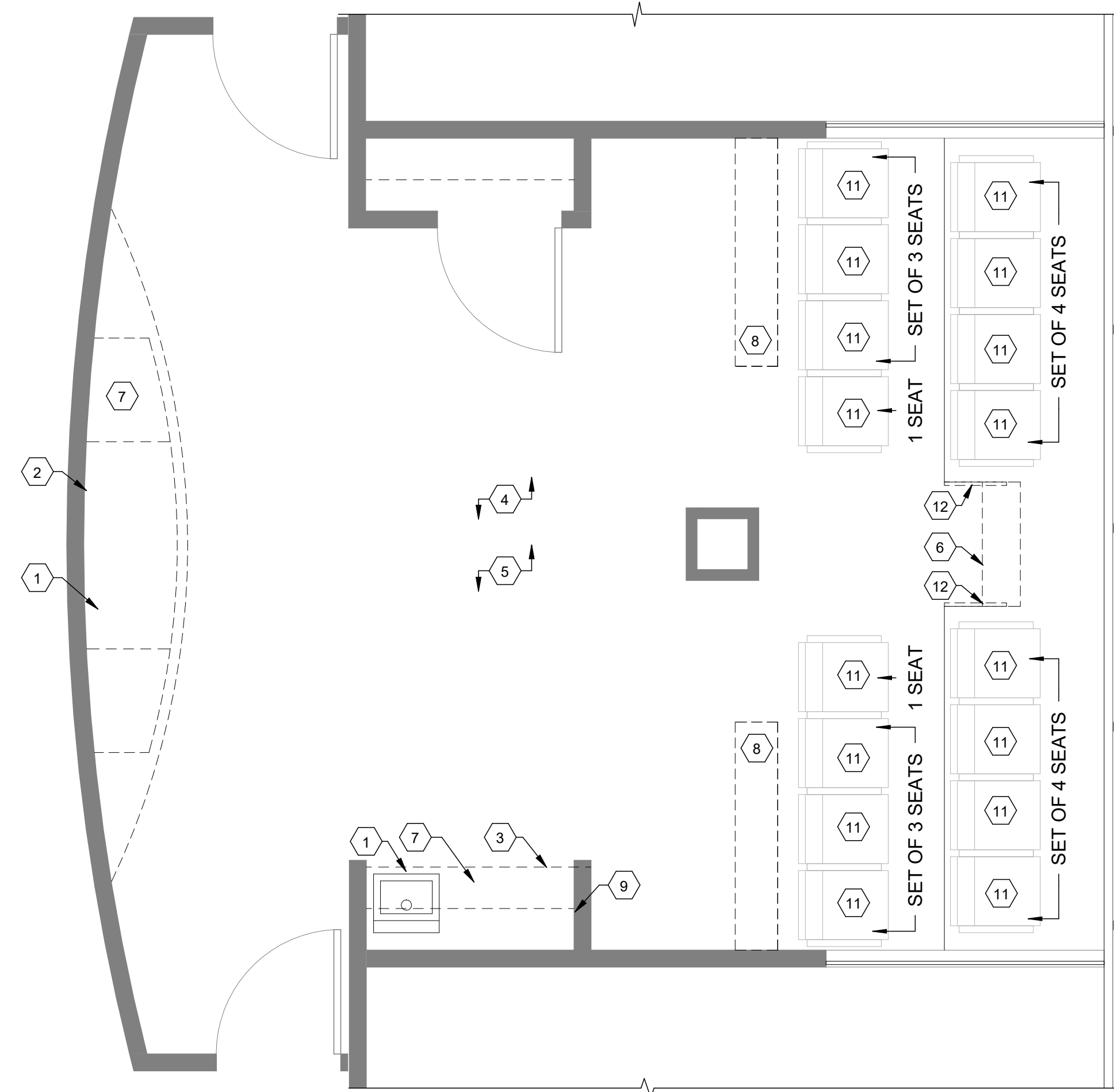
- A NEW FIXED SEATING, REF SEET A704
- B NEW BAR-HEIGHT COUNTER, REF SHEET A201
- C NEW CASEWORK, REF. SHEET A201
- D RE-USE EXISTING SINK
- E NEW ICE SINK - CONTRACTOR FURNISHED + INSTALLED
- F NEW UNDERCOUNTER REFRIGERATOR - CONTRACTOR FURNISHED + INSTALLED
- G NEW STEAM WELLS - CONTRACTOR FURNISHED + INSTALLED
- H NEW TRASH OPENINGS - TRASH CAN TO BE CONTRACTOR FURNISHED + INSTALLED
- I NEW COUNTERTOPS, REF. SHEET A201
- J NEW STEPS TO MATCH EXISTING
- K RE-USED HAND RAILING
- L NEW HAND RAILING, MATCH EXISTING STYLE AND COLOR



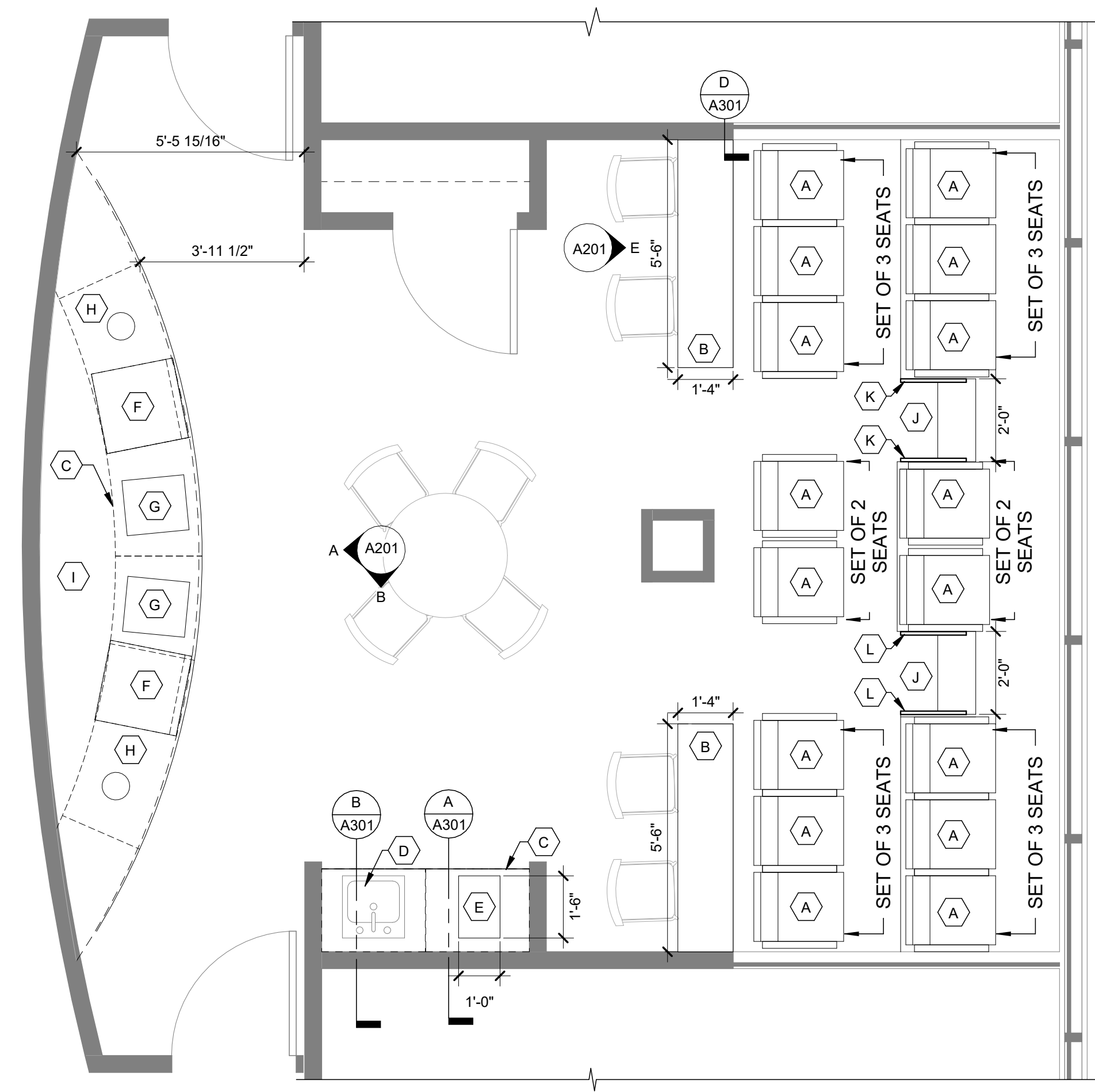
HOSPITALITY BAR DEMO  
3/8" = 1'-0"  
0 2' 4' 6'



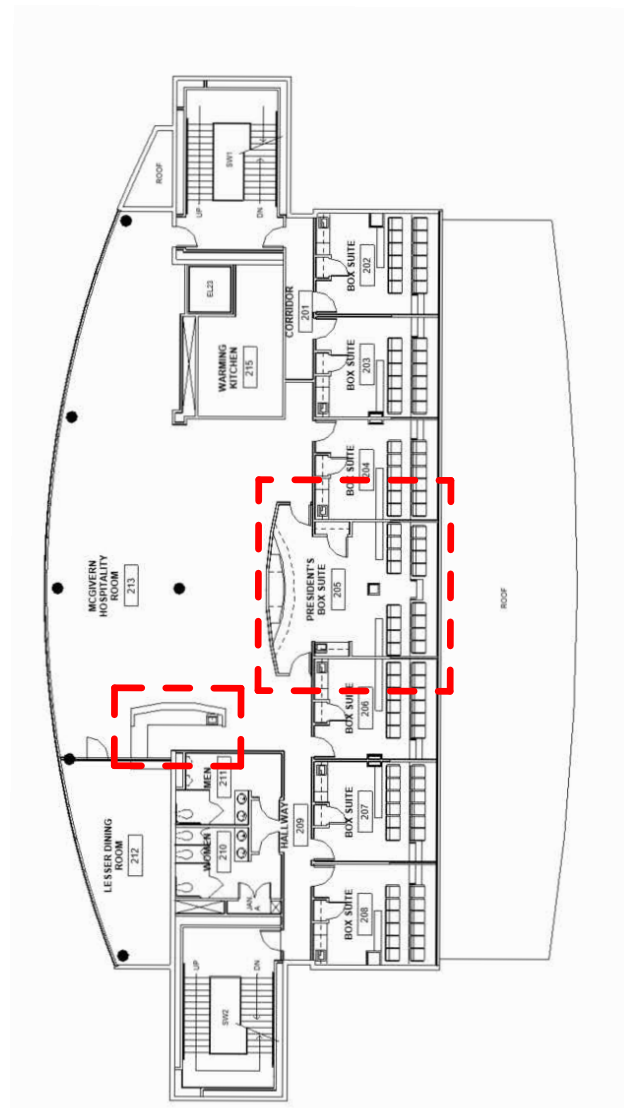
HOSPITALITY BAR PLAN  
3/8" = 1'-0"  
0 2' 4' 6'



PRESIDENT'S SUITE DEMO  
3/8" = 1'-0"  
0 2' 4' 6'



PRESIDENT'S SUITE PLAN  
3/8" = 1'-0"  
0 2' 4' 6'



LEVEL 2 KEY PLAN

DATE PRINTED: 1/27/2025 10:50:43 AM  
FILE PATH: G:\shared\projects-by-id\17FD\WDA\WIK\wz\wz\GA-mw\KUDL\XPD24 Contract\2024-073 Washburn Presidents Suite.rvt 08.29.rvt  
Suite.rvt\2024-073 Washburn Presidents Suite.rvt 08.29.rvt

WASHBURN PRESIDENT'S SUITE  
1700 SW COLLEGE AVE, TOPEKA, KS 66621



DRAWN BY: MB  
CHECKED BY: BJF

**FALK**  
ARCHITECTS  
© 2024 Falk Architects Inc

A101

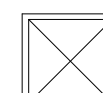
FLOOR PLANS

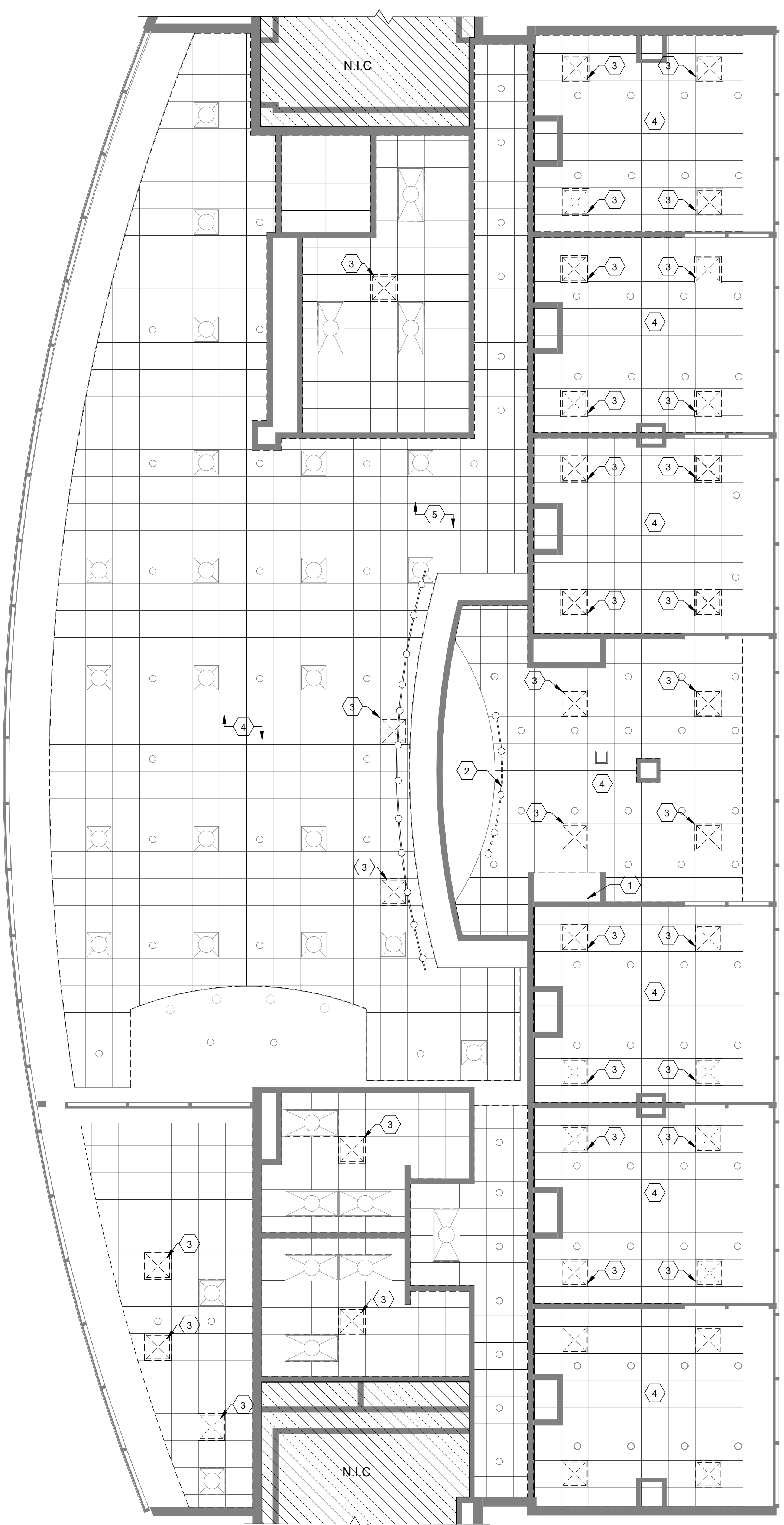
### RCP DEMO NOTES

- 1 REMOVE AND DISPOSE OF EXISTING SOFFIT CEILING. REPLACE WITH NEW SOFFIT TO MATCH HEIGHT OF WEST WALL SOFFIT.
- 2 REMOVE AND DISPOSE OF TRACK LIGHTING.
- 3 (ALTERNATE BID #1) REMOVE AND DISPOSE OF ALL EXISTING DIFFUSERS. REPLACE WITH NEW DIFFUSERS.
- 4 (ALTERNATE BID #1) REMOVE AND DISPOSE OF EXISTING CEILING TILES. REPLACE WITH NEW CEILING TILES. RE-USE GRID. EXISTING LIGHTING TO REMAIN. CONTRACTOR TO RE-INSTALL FIRE SPRINKLER HEADS AT CURRENT LOCATIONS.

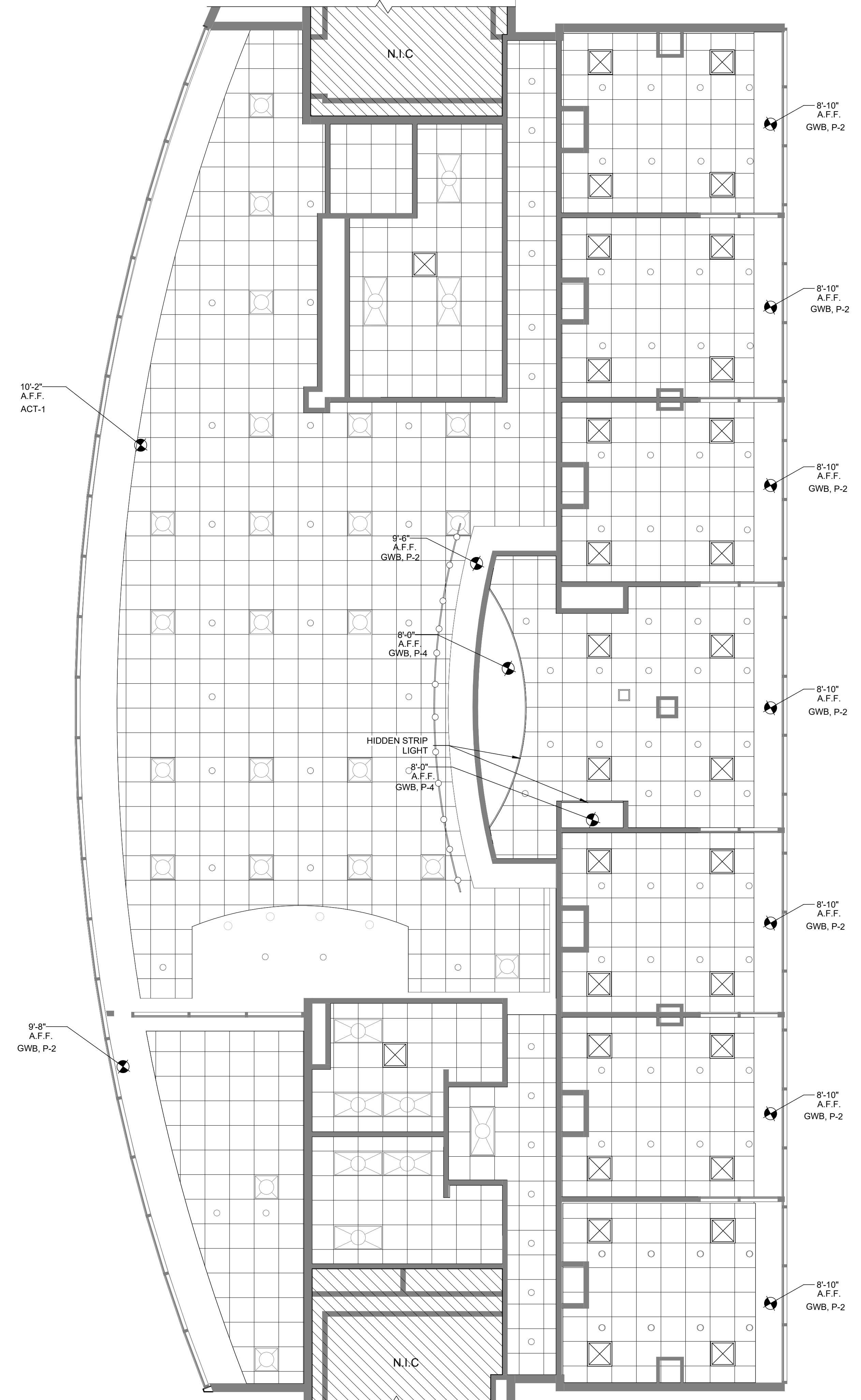
NOTE: VERIFY LOCATION OF ALL CEILING ELEMENTS BEFORE BEGINNING WORK.

### RCP LEGEND

-  2x2' DIFFUSER
- 



**LEVEL 2 DEMO RCP**  
3/16" = 1'-0"  
0 4' 8' 16'




**LEVEL 2 RCP**  
3/16" = 1'-0"  
0 4' 8' 16'

DATE PRINTED: 1/27/2025 10:50:44 AM  
FILE PATH: G:\projects\2024-073 Washburn Presidents Suite.rvt  
Suite.rvt 2024-073 Washburn Presidents Suite.rvt 08:29:17

CD  
DATE: 01-23-2025  
2024-073

**WASHBURN PRESIDENT'S SUITE**  
1700 SW COLLEGE AVE, TOPEKA, KS 66621



DRAWN BY: MB  
CHECKED BY: BJF

**FALK ARCHITECTS**  
© 2024 Falk Architects Inc

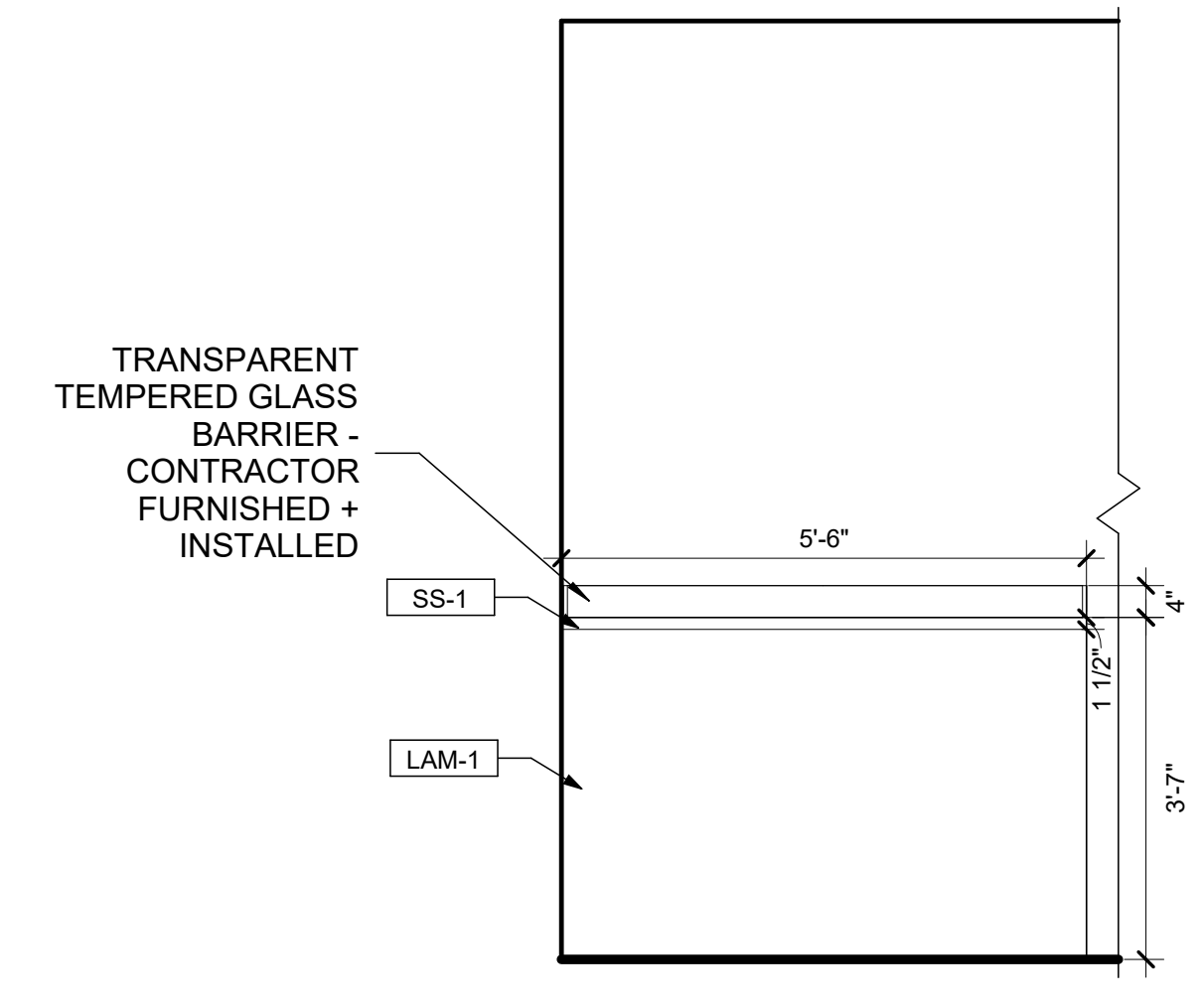
**A102**

CEILING PLANS  
FALK ARCHITECTS INC

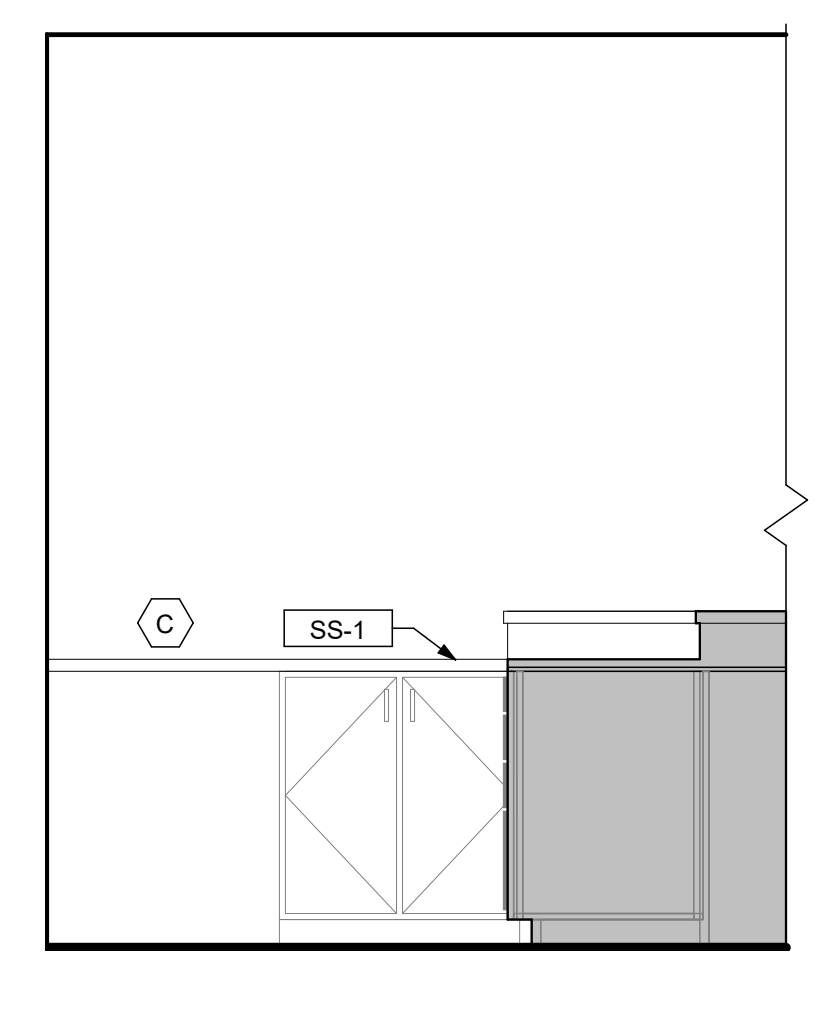
**WASHBURN PRESIDENT'S SUITE**  
1700 SW COLLEGE AVE, TOPEKA, KS 66621

**EQUIPMENT LEGEND**

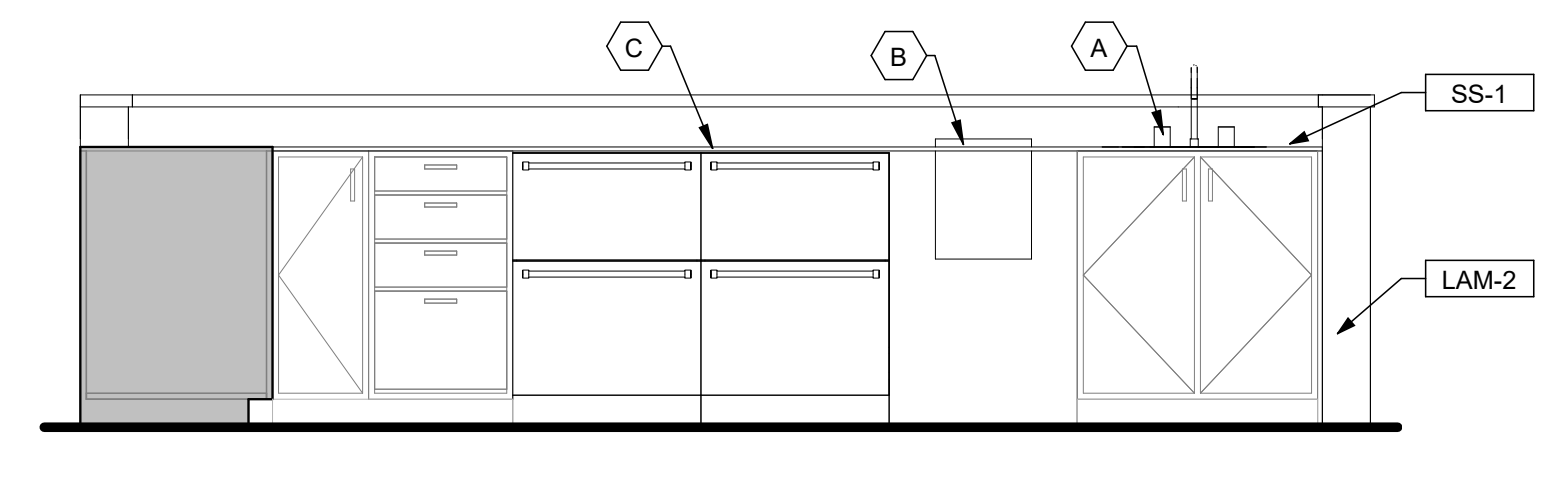
- A SINK - EXISTING
- B ICE SINK - OWNER FURNISHED + CONTRACTOR INSTALLED
- C UNDERCOUNTER REFRIGERATOR - CONTRACTOR FURNISHED + CONTRACTOR INSTALLED
- D STEAM WELL - CONTRACTOR FURNISHED + CONTRACTOR INSTALLED
- E UNDERCOUNTER TRASH PLACED WITHIN CASEWORK - CONTRACTOR FURNISHED + CONTRACTOR INSTALLED



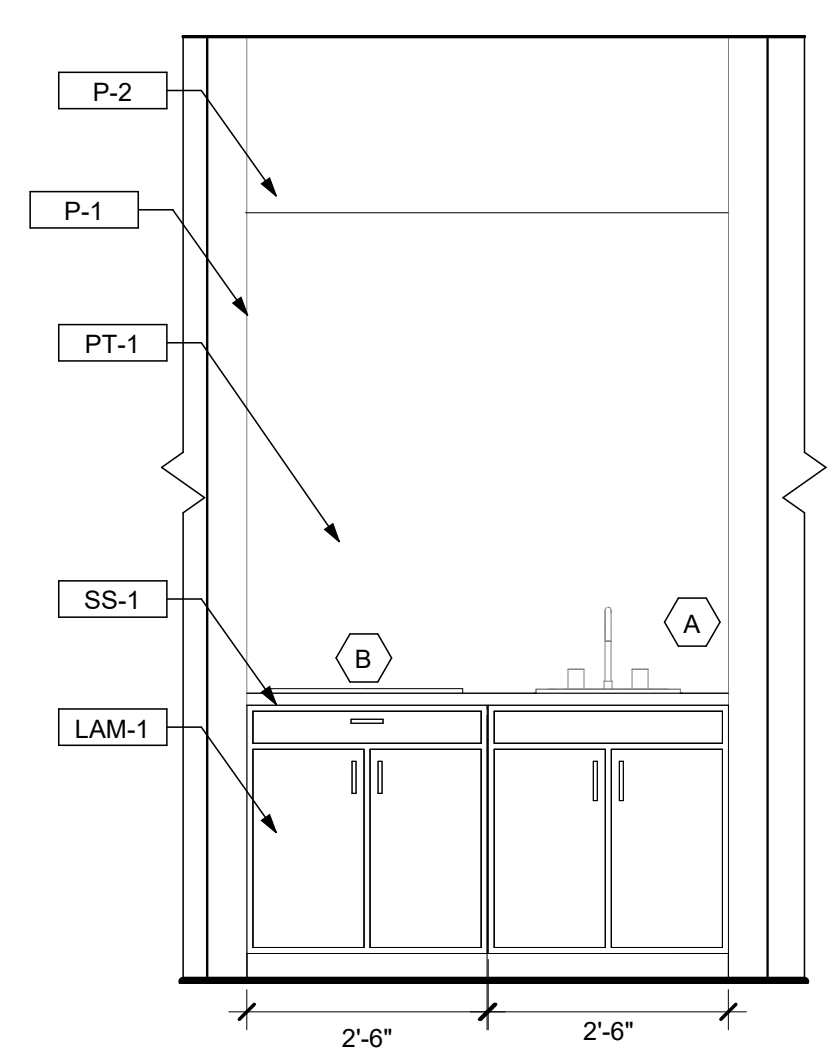
**BAR-HIEGHT COUNTER ELEVATION E**  
1/2" = 1'-0"  
0 1' 2' 4'



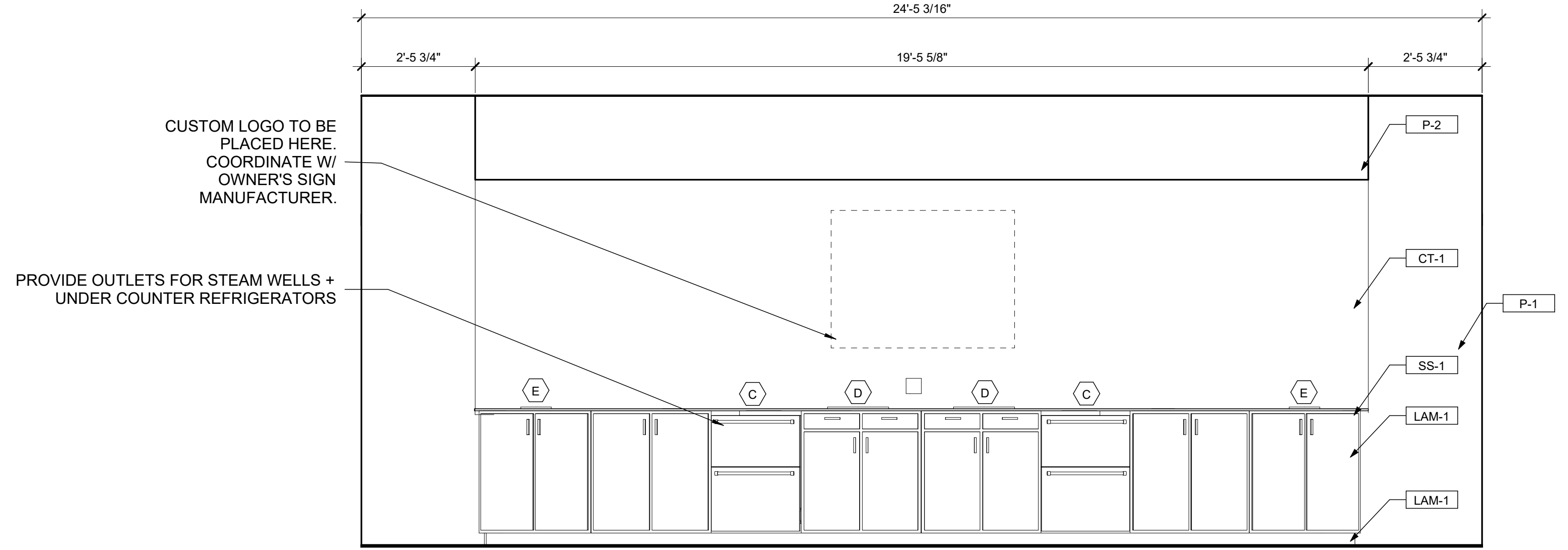
**WEST ISLAND ELEVATION D**  
1/2" = 1'-0"  
0 1' 2' 4'



**NORTH ISLAND ELEVATION C**  
1/2" = 1'-0"  
0 1' 2' 4'



**SOUTH CASEWORK ELEVATION B**  
1/2" = 1'-0"  
0 1' 2' 4'



**WEST CASEWORK ELEVATION A**  
1/2" = 1'-0"  
0 1' 2' 4'

DATE PRINTED: 1/27/2025 10:50:44 AM  
FILE PATH: G:\shortcuts\projects-by-id\17FD\WDA\WIK\WZ\WZ\GAA-mw\KUD\XPD\24 Contract\2024-073 Washburn Presidents Suite\revit\2024-073 Washburn Presidents Suite.rvt 08.29.rvt



DRAWN BY: MB  
CHECKED BY: BJF

**FALK ARCHITECTS**  
© 2024 Falk Architects Inc

**A201**

ELEVATIONS

FALK ARCHITECTS INC

WASHBURN PRESIDENT'S SUITE  
1700 SW COLLEGE AVE, TOPEKA, KS 66621

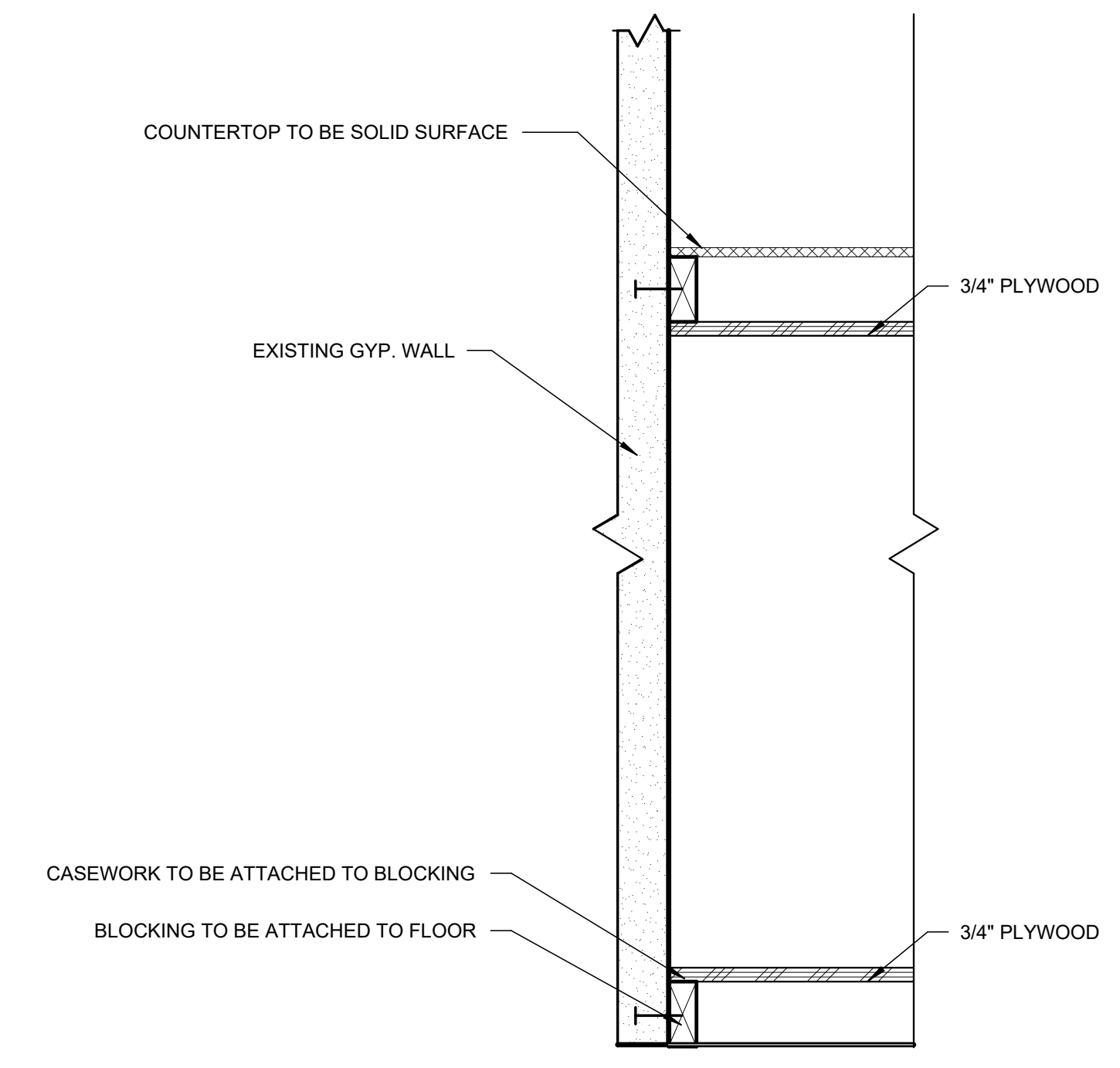


DRAWN BY: MB  
CHECKED BY: BJJ

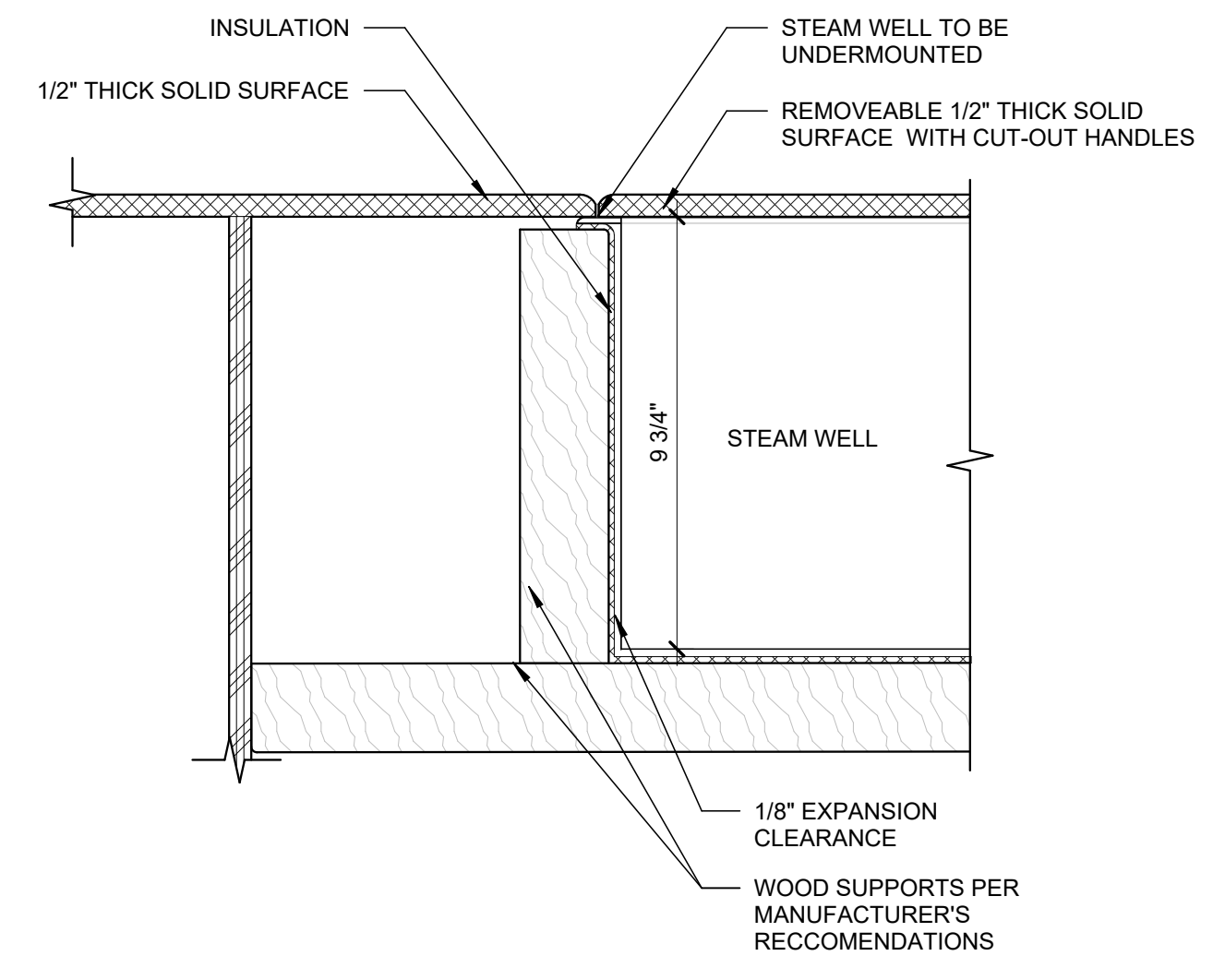
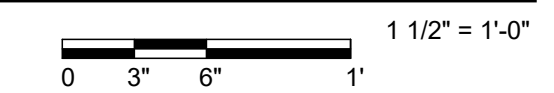
**FALK ARCHITECTS**  
© 2024 Falk Architects Inc.

A301

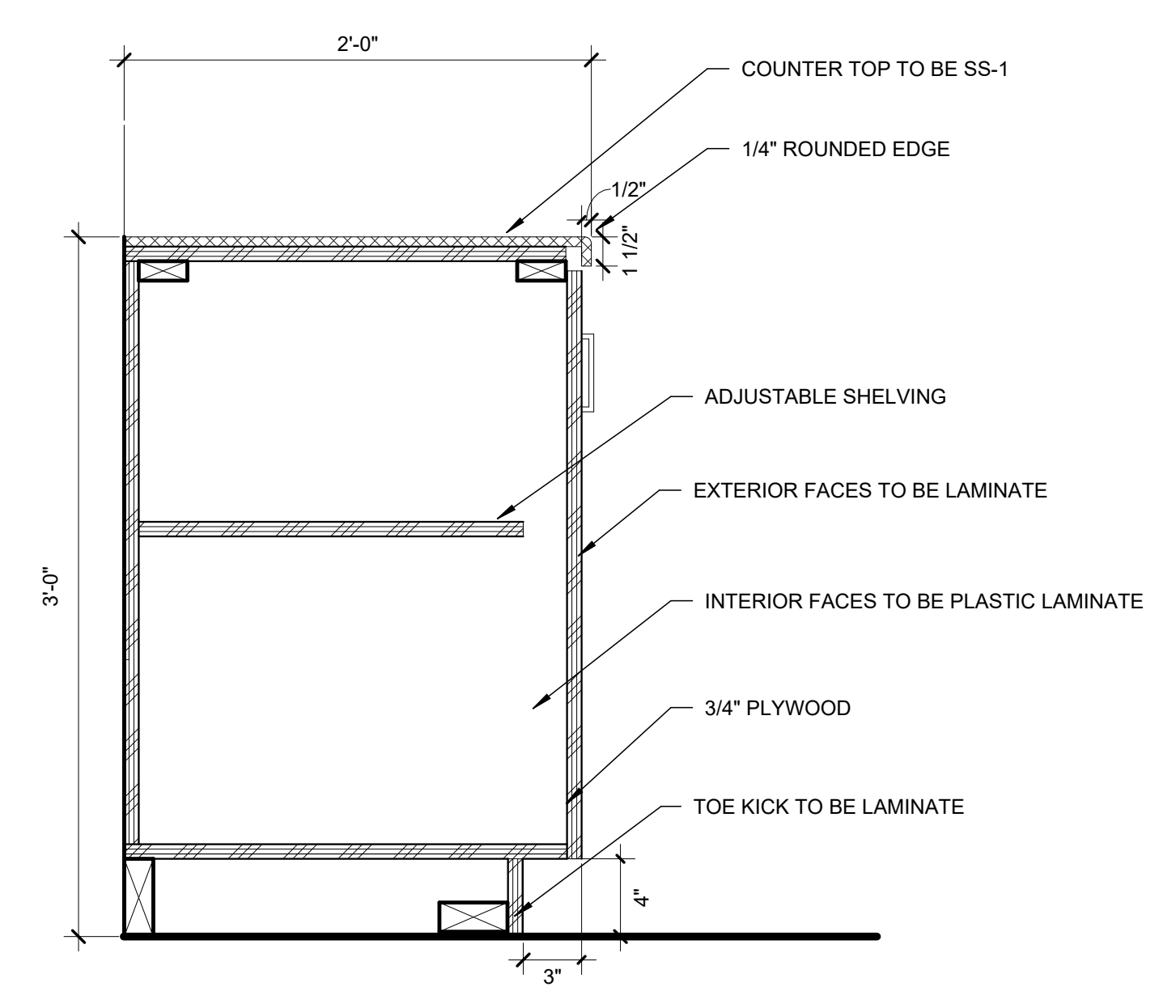
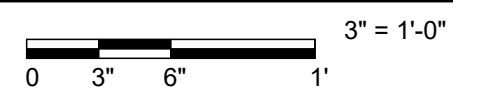
DETAILS



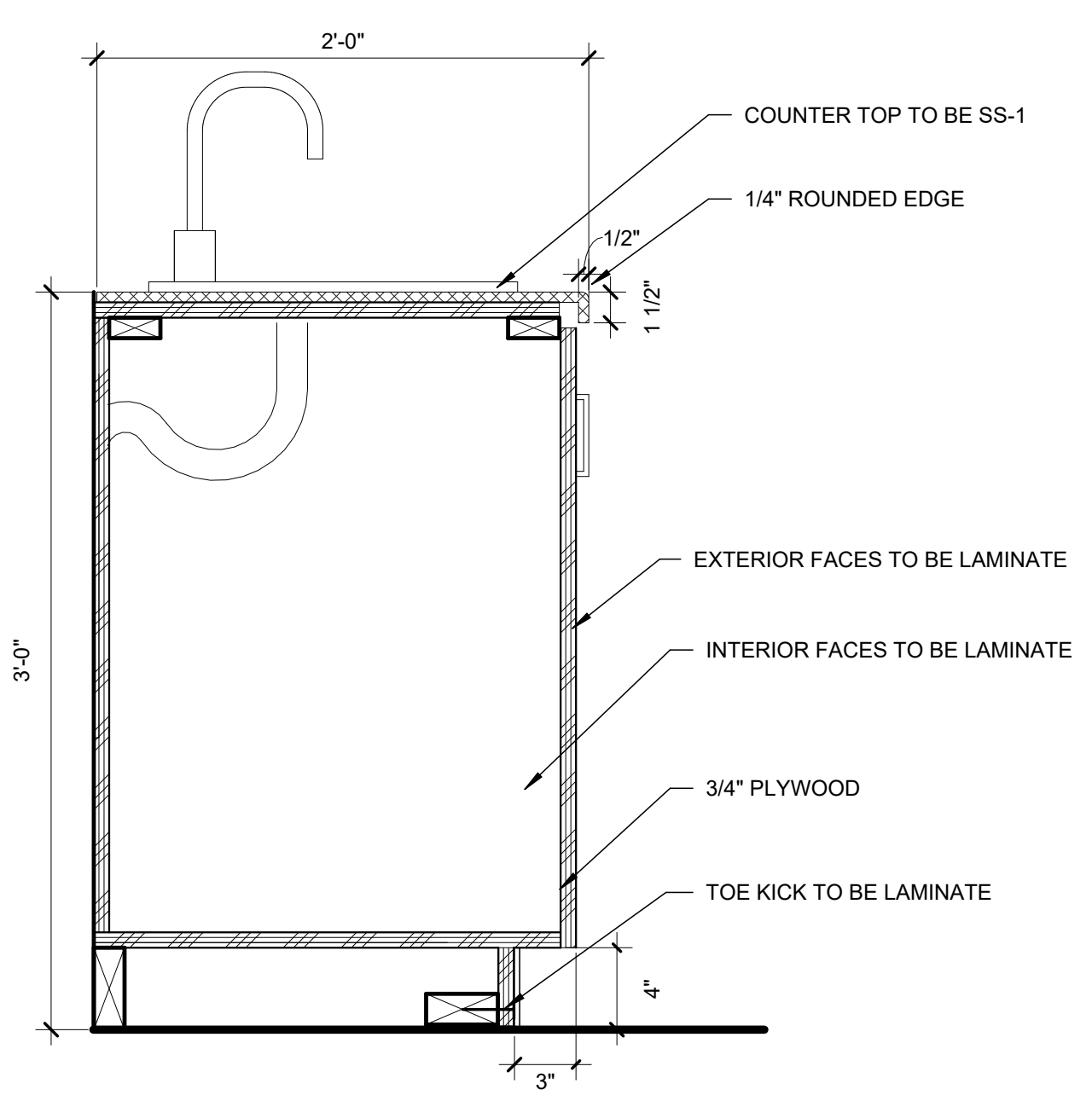
**COUNTER TO WALL TRANSITION D**



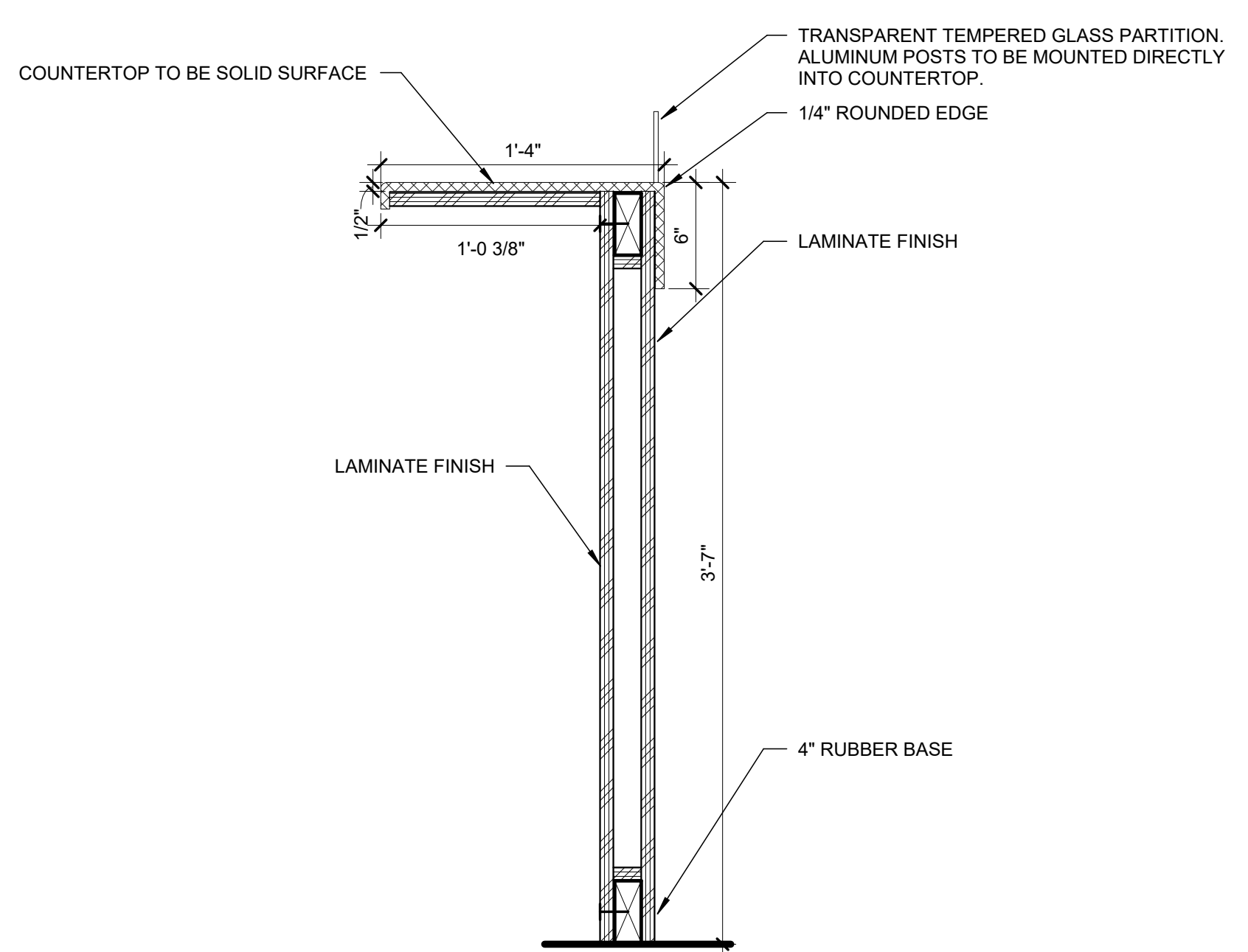
**CUSTOM STEAM WELL COUNTER TOP E**



**TYP. CABINET SECTION A**



**TYP. SINK SECTION B**



**BAR-HEIGHT COUNTER SECTION C**



NOTE: ROUTE, REINFORCE, INSULATE, AND SUPPORT CUTOUT PER MANUFACTURER'S SPECIFICATIONS.

DATE PRINTED: 1/27/2025 10:50:44 AM  
FILE PATH: G:\sbsrcut\layouts-by-id\17\FD\WDA\WIKI\wzbsb\GRA-mw\KUDLXPD24 Contract\2024-073 Washburn Presidents Suite\revit\2024-073 Washburn Presidents Suite.rvt 08.29.rvt

# FINISH SCHEDULE

## CARPET

CPT-1 GENERAL CARPET  
 MANUF.: SHAWCONTRACT  
 PRODUCT TYPE: CARPET TILE  
 COLLECTION: CREATIVE ZONE  
 NAME: DAYDREAMER TILE  
 STYLE #: 5T593  
 SIZE: 24" x 24"  
 COLOR: BRAINSTORM BLUE 93486  
 INSTALLATION: BRICK ASHLAR

## CEILING

ACT-1 ACOUSTIC CEILING TILE  
 MANUF.: USG  
 PRODUCT: 4221 OLYMPIA MICRO  
 COLOR: WHITE  
 SIZE: 24"W x 24"L

## HARDWARE

HDW-1 GENERAL HARDWARE  
 MANUF.: EMTEK  
 PRODUCT TYPE: CABINET PULL  
 NAME: TRINITY CABINET PULL  
 SKU: 86263US14  
 COLOR: POLISHED NICKEL

## LAMINATE

LAM-1 SOLID LAMINATE  
 MANUF.: FORMICA  
 PRODUCT: LAMINATE  
 STYLE #: 969  
 COLOR: NAVY BLUE  
 FINISH: MATTE  
 REPEAT: 96"L x 30"W

LAM-2 QUARTZ-LOOK LAMINATE  
 MANUF.: WILSONART  
 PRODUCT: LAMINATE  
 STYLE #: Y0456  
 COLOR: ISSELBURG  
 FINISH: TEXTURED GLOSS  
 REPEAT: 62"W x 51"L

## SOLID SURFACE

SS-1 SOLID SURFACE  
 MANUF.: WILSONART  
 PRODUCT TYPE: SOLID SURFACE  
 STYLE #: 9913SS  
 COLOR: CALACATTA PERLATO

## MATERIAL KEY

CPT CARPET TILE  
 HDW HARDWARE  
 LAM LAMINATE  
 SS SOLID SURFACE  
 P PAINT  
 CT CERAMIC TILE

## PAINT

P-1 GENERAL WALL PAINT  
 MANUF.: BENJAMIN MOORE  
 PRODUCT: INTERIOR PAINT  
 COLOR: SW 7005 PURE WHITE COLOR MATCH  
 FINISH: SATIN

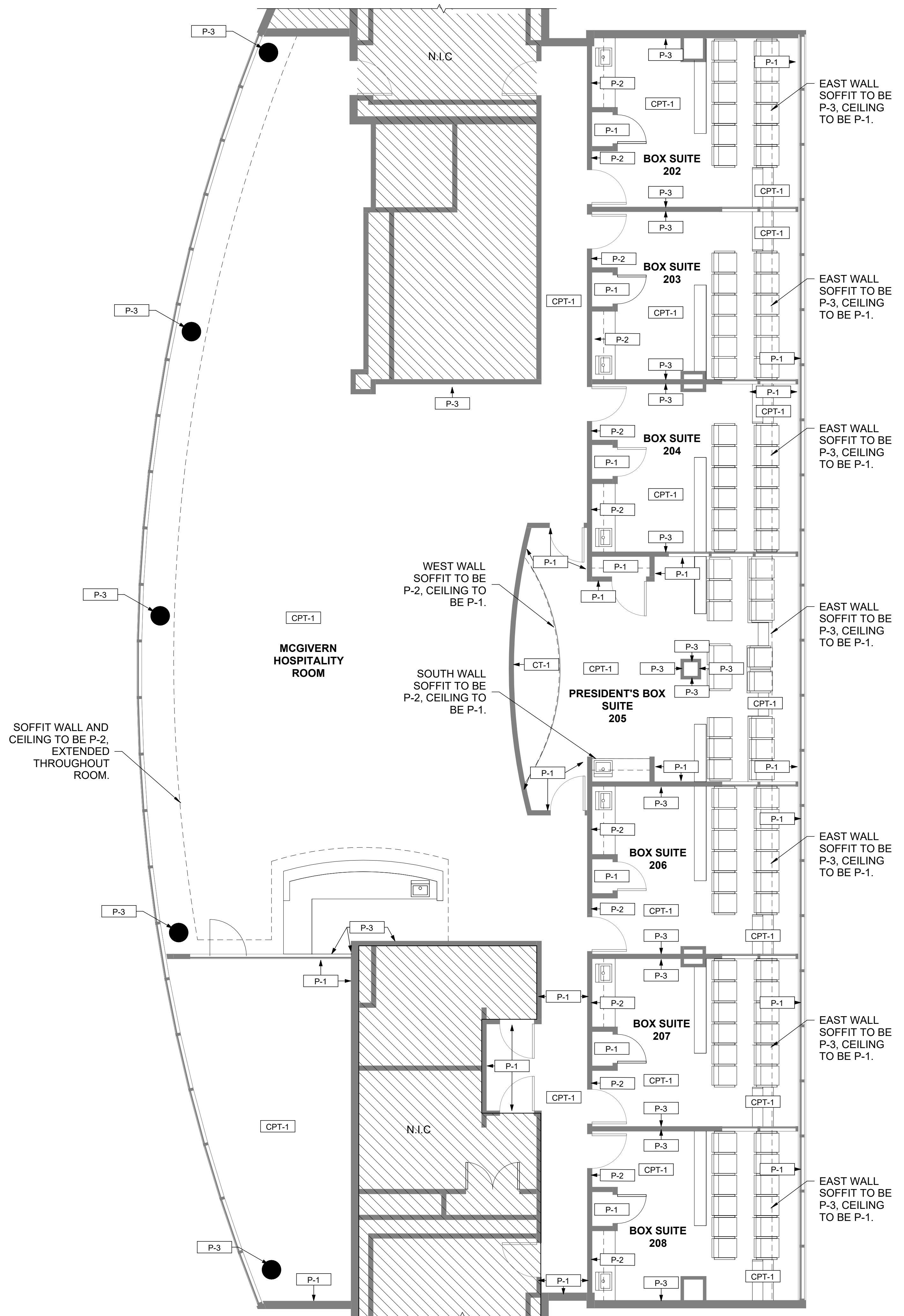
P-2 ACCENT WALL PAINT  
 MANUF.: BENJAMIN MOORE  
 PRODUCT: INTERIOR PAINT  
 COLOR: ADMIRALTY BLUE PPG 1042-7 COLOR MATCH  
 FINISH: SATIN

P-3 ACCENT WALL PAINT  
 MANUF.: BENJAMIN MOORE  
 PRODUCT: INTERIOR PAINT  
 COLOR: LIGHT BLUE 2066-70  
 FINISH: SATIN

## CERAMIC TILE

CT-1 WOOD-EFFECT CERAMIC TILE  
 MANUF.: TILE BAR  
 PRODUCT: KENRIDGE RIBBON MAPLE BROWN 24X48  
 WOOD LOOK MATTE FLUTED PORCELAIN TILE  
 COLOR: MAPLE  
 FINISH: MATTE  
 SIZE: 24"X48"

NOTES:  
 NEW CARPET AND PAINT IN SUITES 202, 203, 204, 206, 207, AND 208 TO BE PART OF ALTERNATE #3. REFERENCE SHEET G000 FOR LIST OF ALTERNATES.



LEVEL 2 FINISH PLAN  
 3/16" = 1'-0"

WASHBURN PRESIDENT'S SUITE  
 1700 SW COLLEGE AVE, TOPEKA, KS 66621



DRAWN BY: MB  
 CHECKED BY: BJF

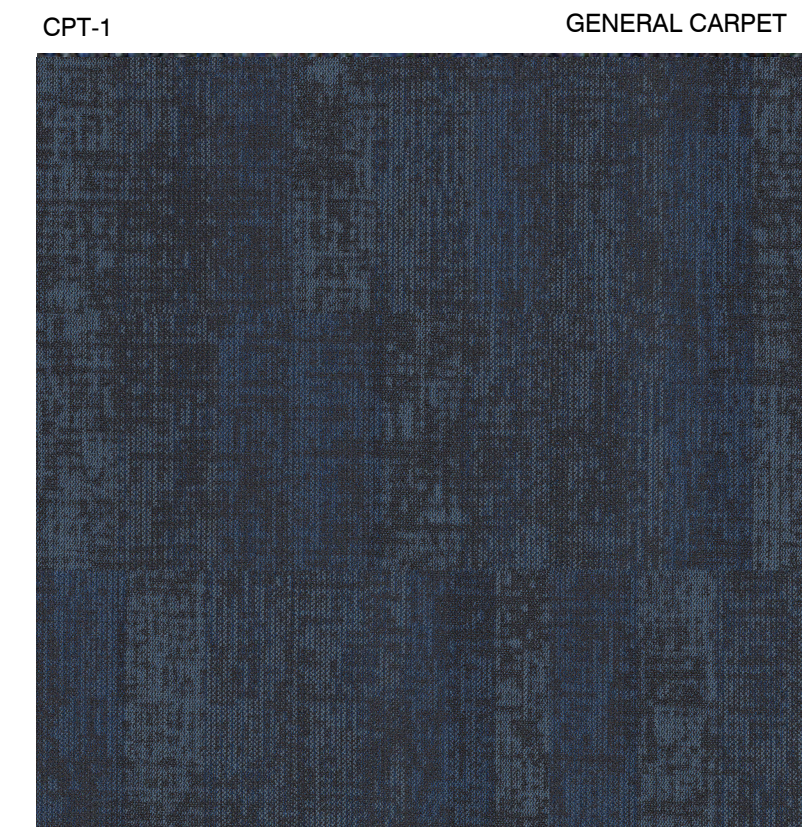
FALK ARCHITECTS  
 © 2024 Falk Architects Inc

A701

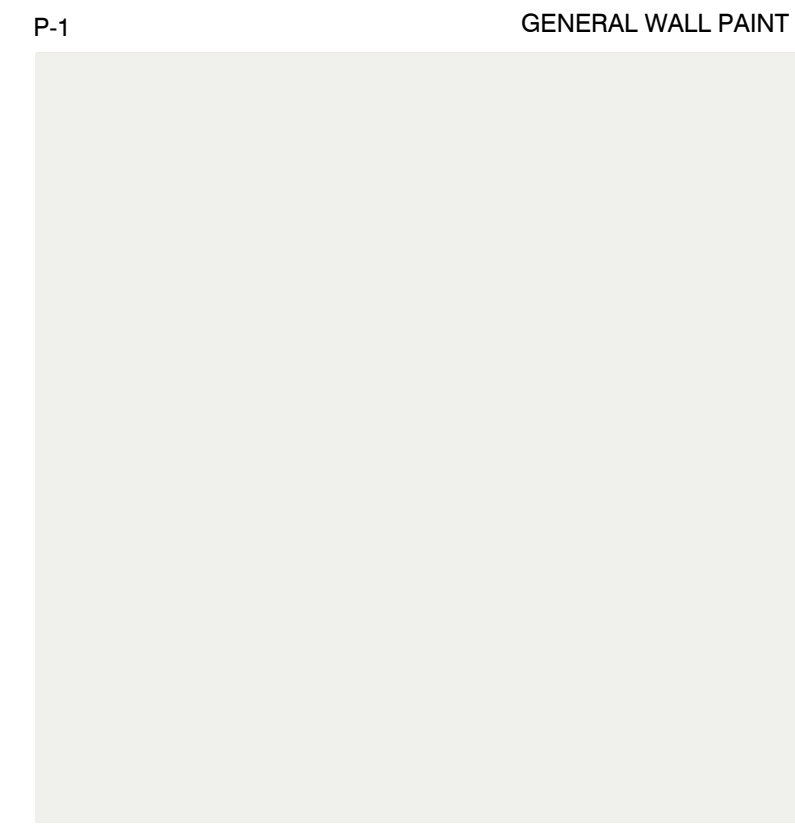
FINISH PLAN + SCHEDULE

DATE PRINTED: 1/27/2025 10:59:45 AM  
 FILE PATH: G:\projects\topkis-by-1611\FD\WDA\WIK\wz\wba\GA-mw\KUDL\XPD\24 Contract\2024-073 Washburn Presidents Suite\revit\2024-073 Washburn Presidents Suite.rvt 08.29.rvt

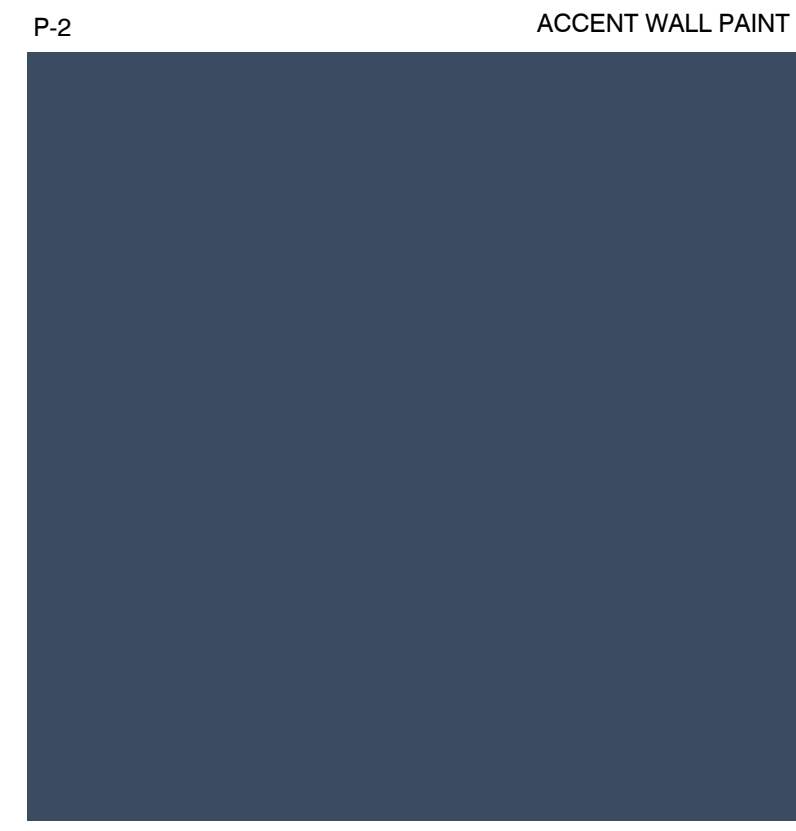
# FINISH BOARD



CPT-1 GENERAL CARPET  
SHAW CONTRACT - DAYDREAMER - BRAINSTORM BLUE



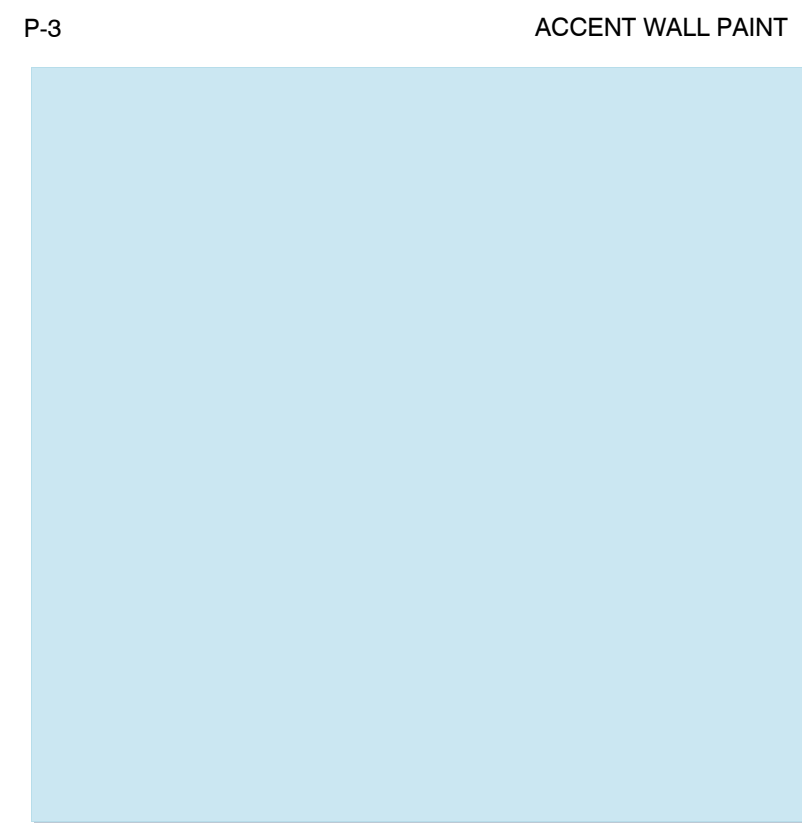
P-1 GENERAL WALL PAINT  
BENJAMIN MOORE TO MATCH SW 7005 PURE WHITE



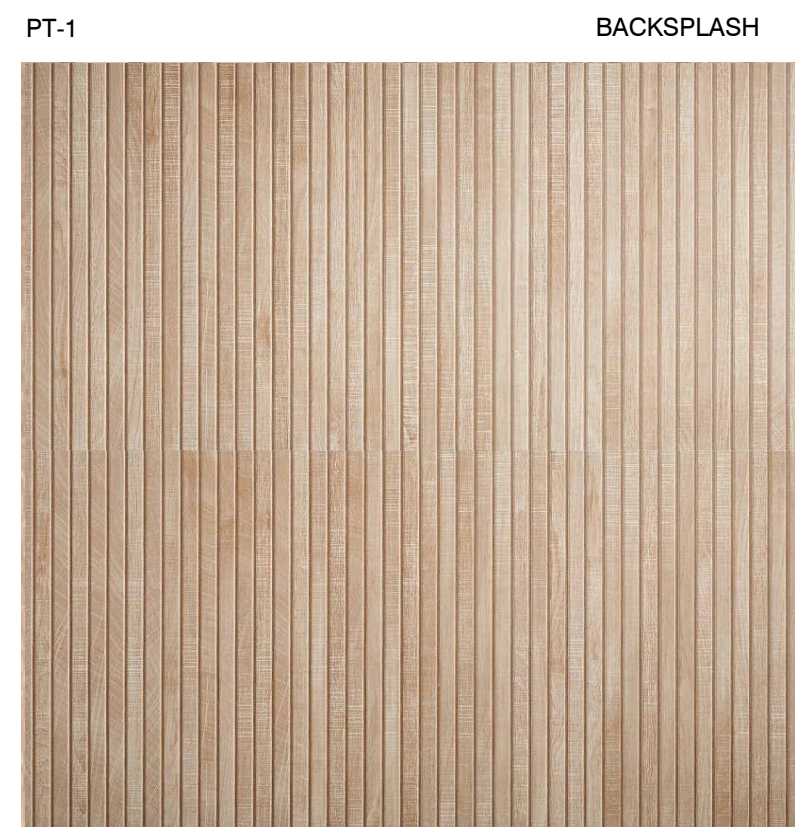
P-2 ACCENT WALL PAINT  
BENJAMIN MOORE TO MATCH ADMIRALTY BLUE PPG 1042-7



HDW-1 HARDWARE  
EMTEK - POLISHED NICKEL



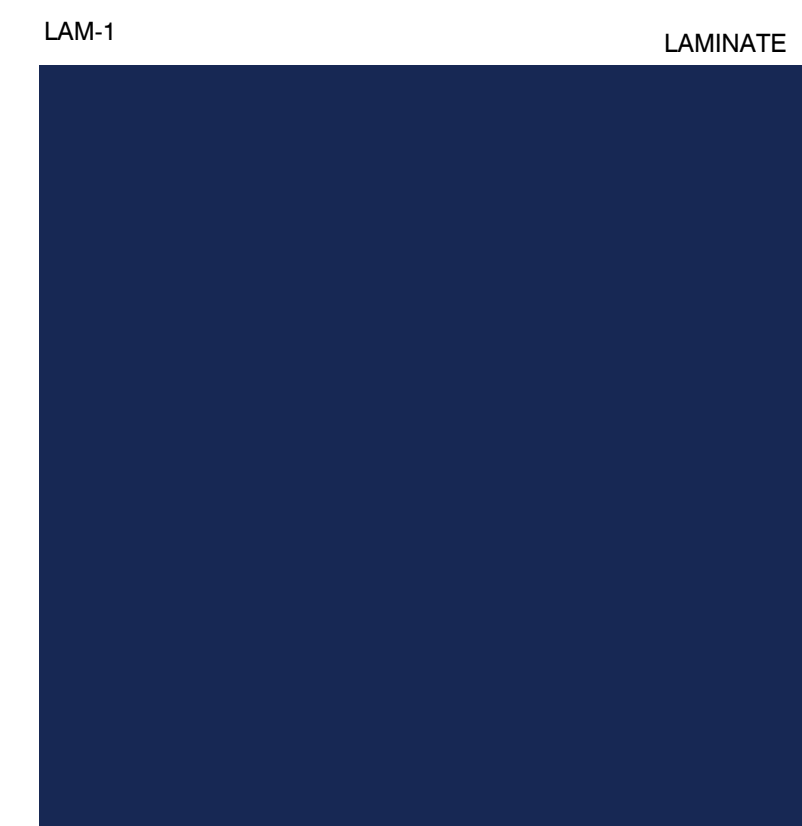
P-3 ACCENT WALL PAINT  
BANJAMIN MOORE - LIGHT BLUE 2066-70



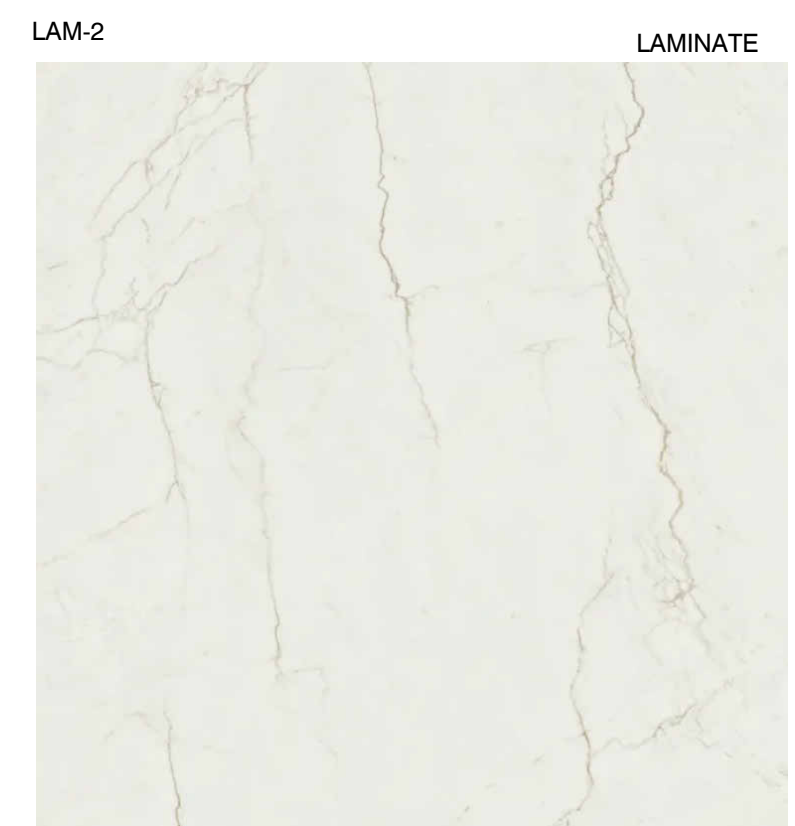
PT-1 BACKSPLASH  
TILEBAR - KENRIDGE RIBBON MAPLE BROWN



SS-1 SOLID SURFACE COUNTERTOP  
WILSONART - CALACATTA PERLATO



LAM-1 LAMINATE  
FORMICA - NAVY BLUE



LAM-2 LAMINATE  
WILSONART - ALUMA MARBLE

DATE PRINTED: 1/27/2025 10:50:45 AM  
FILE PATH: G:\shortcut-targets-by-id\T\FD\WDA\WIKI\wzwb\GPA-mw\KUD\XPD\24 Contract\2024-073 Washburn Presidents Suite\revit\2024-073 Washburn Presidents Suite.rvt 08.29.rvt

CD  
DATE: 01-23-2025  
2024-073

WASHBURN PRESIDENT'S SUITE  
1700 SW COLLEGE AVE, TOPEKA, KS 66621



DRAWN BY: MB  
CHECKED BY: BJJ

**FALK**  
ARCHITECTS  
© 2024 Falk Architects Inc

A702

FINISH BOARD

FALK ARCHITECTS INC

# EQUIPMENT/FIXTURE SCHEDULE

## ICE BIN

MARK: A QTY.: 2  
 DISTRIBUTOR: WEBSTAURANT STORE  
 NAME: REGENCY 18" X 12" STAINLESS STEEL DROP-IN ICE BIN  
 ITEM NO.: 600DIB1812

## UNDER-COUNTER REFRIGERATOR

MARK: B QTY.: 1  
 DISTRIBUTOR: KATOM RESTAURANT SUPPLY, INC.  
 NAME: TURBO AIR JUF-48S-N 47 1/4" W UNDERCOUNTER REFRIGERATOR W/ 2 SECTION & 2 DOOR, 115V  
 DIMENSIONS: 47.25"W X 24.63"D X 33.75"H  
 KATOM NO.: 083-JUR48SN6  
 MPN NO.: JUR-48S-N6

MARK: C QTY.: 2  
 DISTRIBUTOR: WEBSTAURANT STORE  
 NAME: AVAVALLEY BRC-84-SZ FULL GLASS DOOR BEVERAGE COOLER  
 DIMENSIONS: 23 1/2"W X 22 11/16"D X 34 1/4"H  
 ITEM NO.: 342BRC84SZ

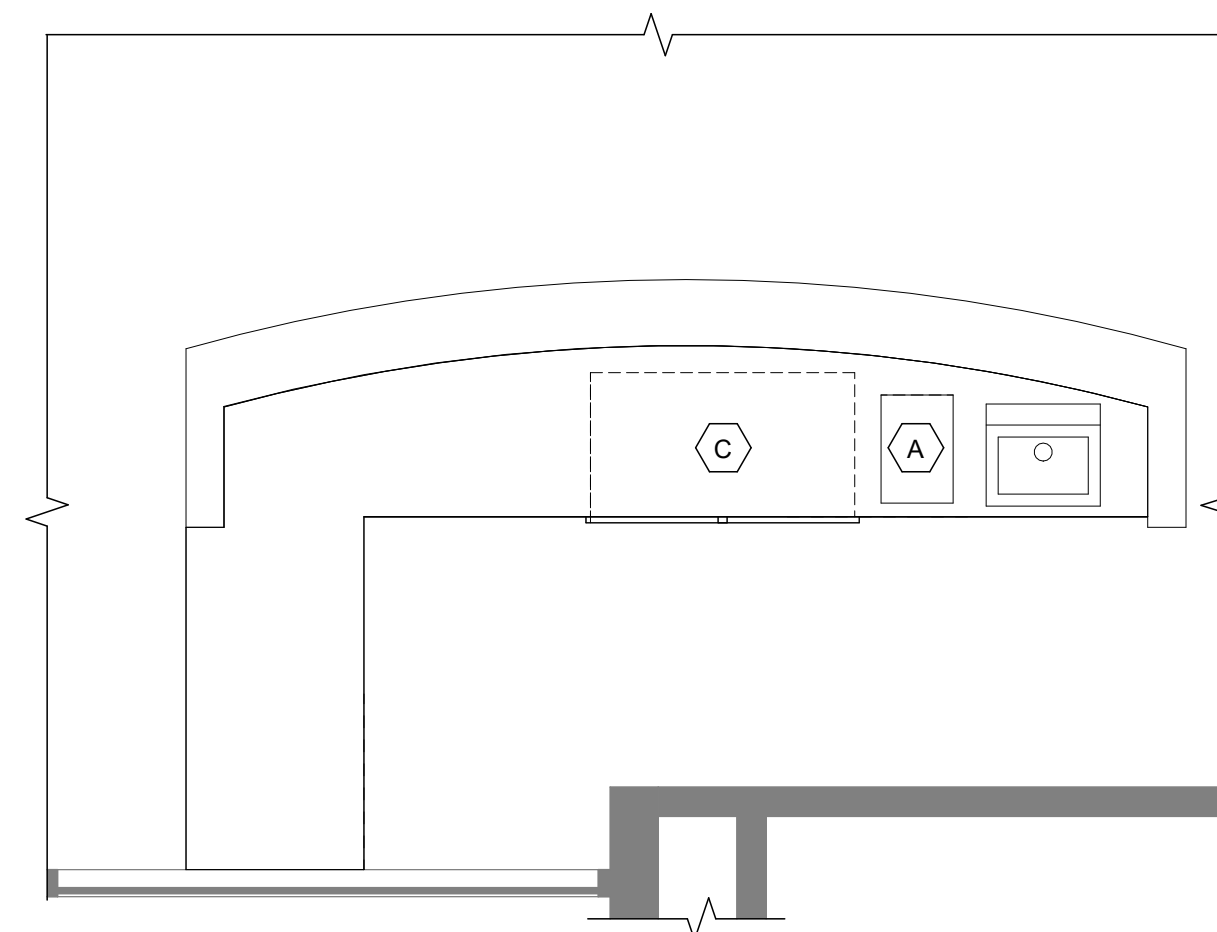
## STEAM WELL

MARK: D QTY.: 1  
 DISTRIBUTOR: THE VOLLRATH COMPANY  
 NAME: MODULAR DROP IN: TOP MOUNT FABRICATOR WELL  
 DIMENSIONS: 15" X 23"  
 NOTES: OPENING CUTOUT MUST HAVE A 7/8" CORNER RADIUS

## FIXED SEATING

MARK: E QTY.: 4  
 DISTRIBUTOR: KI  
 NAME: CONCERTO AUDITORIUM SEATING  
 FABRIC PATTERN: BRIO  
 FABRIC COLOR: BLUEJAY  
 END PANEL FINISH: CHERRY STORM ON MAPLE  
 BACK MATERIAL: PLASTIC  
 ARM CAPS: WOOD W/ CUPHOLDER  
 NOTES: SET OF 3 SEATS W/ END PANEL ON ONE END

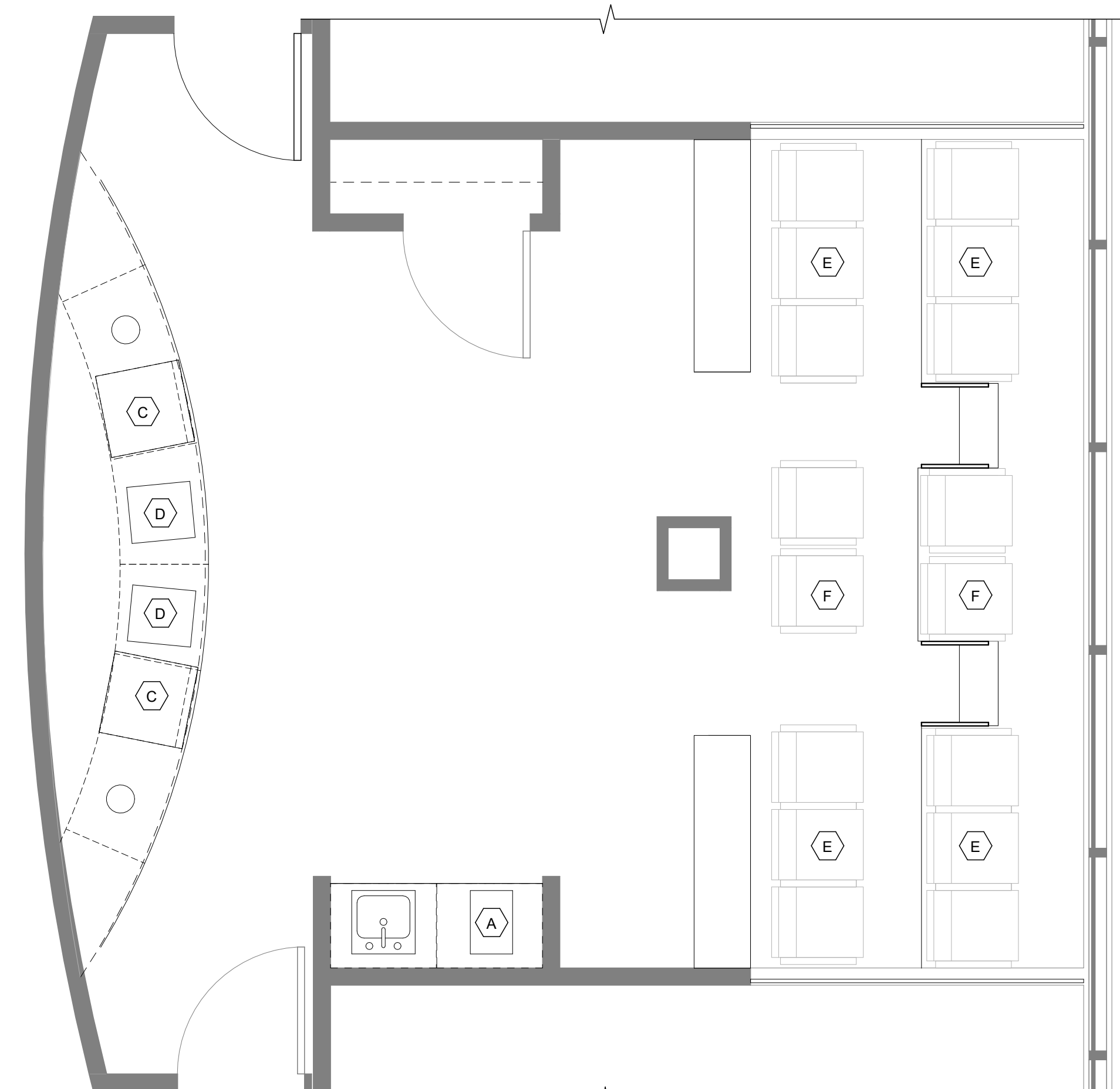
MARK: F QTY.: 2  
 DISTRIBUTOR: KI  
 NAME: CONCERTO AUDITORIUM SEATING  
 FABRIC PATTERN: BRIO  
 FABRIC COLOR: BLUEJAY  
 END PANEL FINISH: CHERRY STORM ON MAPLE  
 BACK MATERIAL: PLASTIC  
 ARM CAPS: WOOD W/ CUPHOLDER  
 NOTES: SET OF 2 SEATS W/ END PANEL ON BOTH ENDS



**HOSPITALITY BAR EQUIPMENT/FIXTURE PLAN**

3/8" = 1'-0"  
 0 2 4 6

**B**



**PRESIDENT'S SUITE EQUIPMENT/FIXTURE PLAN**

3/8" = 1'-0"  
 0 2 4 6

**A**

**WASHBURN PRESIDENT'S SUITE**  
 1700 SW COLLEGE AVE, TOPEKA, KS 66621



DRAWN BY: MB  
 CHECKED BY: BJF

**FALK ARCHITECTS**  
 © 2024 Falk Architects Inc

**A704**

EQUIPMENT/FIXTURE PLAN + SCHEDULE

DATE PRINTED: 1/27/2025 10:50:45 AM  
 FILE PATH: G:\shortcuts\projects-by-id\17\FD\WDA\WIKI\washburn\A704\mww\KUDLXPD24 Contract\2024-073 Washburn Presidents Suite\revit\2024-073 Washburn Presidents Suite.rvt 08.29.rvt