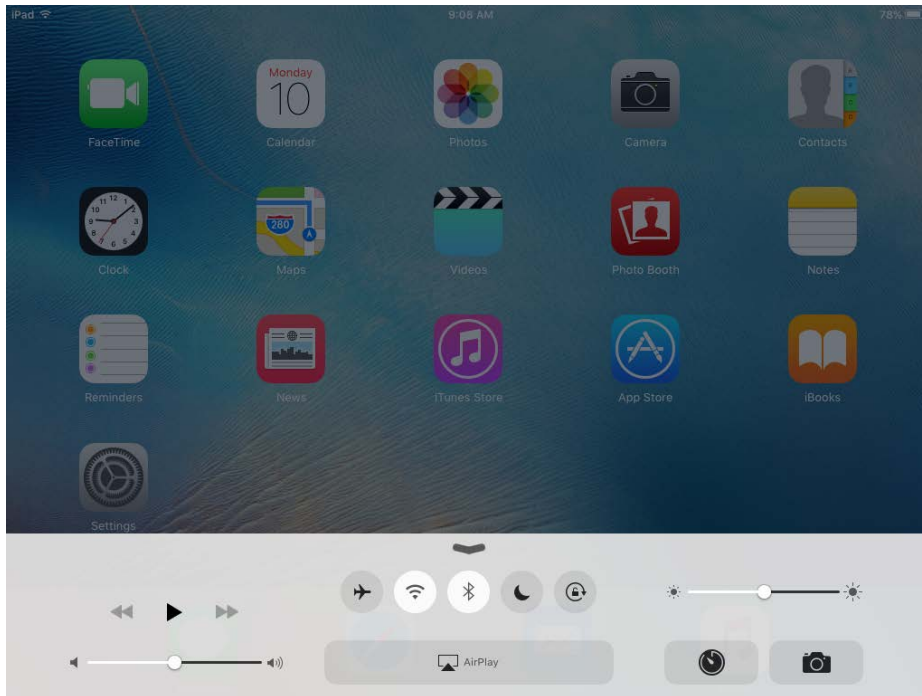
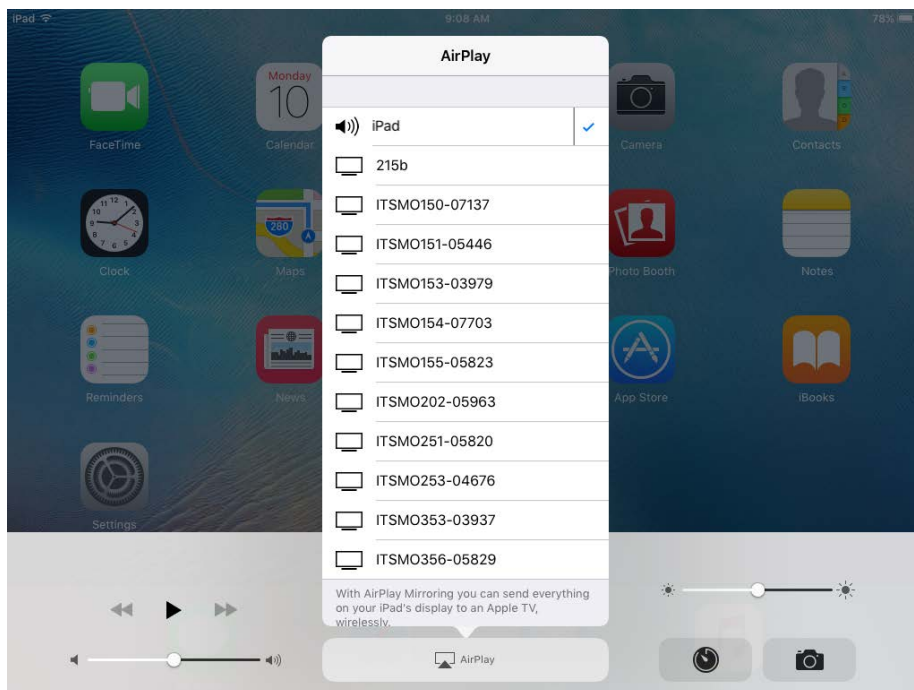


# Wirelessly Connect to the Projector with iOS Devices



- Make sure your device is on the WU-Secure Wi-Fi network.
- On your iOS device, swipe up from the bottom of your screen to access the Control Center.



- Tap the AirPlay icon. You should now see a list of logged in computers to wirelessly connect to.
- When you select your room. An Access code will appear onscreen. Type in access code on your device to connect.